



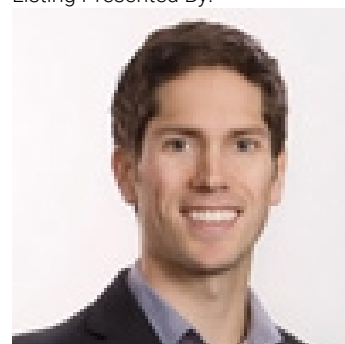
18555 Matsu Drive Summerland British Columbia

\$13,900,000

Offered for sale is Sage Hills Estate Winery, an established premium boutique winery in Summerland, BC. This offering includes a stunning modern residence, all located on an irreplaceable 10.36 acre parcel overlooking Lake Okanagan. The main home features 4,576 sqft of interior living with 4 beds + den, 4 baths, perched on the mountainside with gorgeous architectural features, including cantilevered living room with 270 degree views. Infinity pool, smart home technology, triple garage, and panoramic views that will surpass all expectations. Over 10 acres of freehold land with vineyards, and long-term leases on neighbouring parcels, as well as a certified organic winery operation with wine-making equipment, tasting room, large venue-friendly patio perfect for weddings or parties, and more. A newly constructed ~80'x40' two storey outbuilding is roughed in for extra accommodations, storage, and expanded operations. The business comes with transferable contracts in place for the next owner. Well-suited for owner-operators wishing to take over operations in full, or an owner wishing to live in a modern home set among the vines with stunning views while the winery runs itself. Management and employees are willing to stay on to assist with a transition, or they can continue to run the operation in full for an absent owner. This is a great opportunity to obtain a premium brand, a stunning residence, and some of the best views that the Okanagan has to offer. (id:6769)

- Bedroom 12'2" x 10'8"
- Wine Cellar 9'4" x 7'9"
- Mud room 11'2" x 7'2"
- Utility room 13'10" x 12'7"
- Laundry room 8' x 7'1"
- Bedroom 13'11" x 12'9"
- Living room 19' x 25'2"
- Family room 10'5" x 14'5"
- Primary Bedroom 14'10" x 12'11"
- 5pc Ensuite bath 16'7" x 15'7"
- Bedroom 16' x 11'9"
- Kitchen 22'7" x 14'10"
- Dining room 17'11" x 14'10"
- Full bathroom 12'3" x 8'8"
- Partial bathroom 12' x 4'
- Recreation room 20' x 41'

Listing Presented By:



Originally Listed by:
Angell Hasman & Assoc Realty Ltd.

<https://hallcassie.com/>



Royal

Lepage Parkside Realty

PO Box 930; 9925 Main St,
Summerland, BC,

Phone: (250) 462-4888
info@joepeters.ca

The property information on this website is derived from the Canadian Real Estate Association's Data Distribution Facility (DDF®). DDF® references real estate listings held by various brokerage firms and franchisees. The accuracy of information is not guaranteed and should be independently verified. The trademarks REALTOR®, REALTORS® and the REALTOR® logo are controlled by The Canadian Real Estate Association (CREA) and identify real estate professionals who are members of CREA. The trademarks Multiple Listing Service® and the associated logos are owned by CREA and identify the quality of services provided by real estate professionals who are members of CREA.