



Regina Saskatchewan

\$389,000

Spacious Corner Cul-De-Sac home in Mount Royal area 1530 sq. ft. 3 bedrooms up, with 2 large bedrooms downstairs in non-regulation suite with kitchen, livingroom, diningroom. Fresh paint, newer laminate flooring in hallway and livingroom, family room with a non functional fireplace needs updating, separate entrance for non reg suite, has upgraded 100amp electric panel, rear private deck with composite decking, natural gas bbq, shed, private back yard, close to schools, bus transportation, grocery shopping, restaurant etc. good location, well taken care of waiting for new ownership, shows very well! (id:6769)

Living room 12'5" x 14'

Dining room 14' x 10'2"

Kitchen 8'3" x 11'6"

Bedroom 13' x 14'

Bedroom 15'8" x 11'4"

4pc Bathroom 5" x 9'

Utility room 13' x 12'

Kitchen 7' x 17'

Family room Measurements not available x 17 ft

Dining room 9'6" x 12'

Living room 13 ft ,4 in x Measurements not available

Bedroom 9'6" x 10'4"

Bedroom 10'6 x 11'

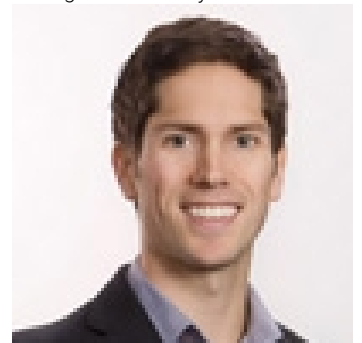
Bedroom 12'4" x 11'

2pc Bathroom Measurements not available

4pc Bathroom Measurements not available

Laundry room 5' x 6'

Listing Presented By:



Originally Listed by:
Realty Executives Diversified Realty

<http://www.kevinpeter.ca>



Royal

Lepage Parkside Realty

PO Box 930; 9925 Main St,
Summerland, BC,

Phone: (250) 462-4888
info@joepeters.ca