



2075 Amundsen Road Lake Country British Columbia

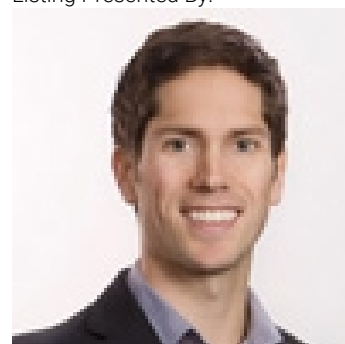
\$1,149,900

Country living at it's finest! Step inside this custom built home and feel like you are a long way away from city life. But it is just a 25 minute drive from downtown kelowna. Take in all the Okanagan has to offer while sitting on the huge wrap around deck morning or evening, the view will have you mesmerized. The .625 Acre lot is ready for a shop, pool or just fill it with fruit trees and vegetable gardens. The home has ample room for the whole family plus the basement is a blank canvas waiting to be finished however you choose. Walking distance to Davidson road Elementary School and lets not forget it is in the heart of Lake County's wineries and only a short distance from Okanagan Lake. This home is ready for you, do not wait on this one. (id:6769)

Primary Bedroom 18'7" x 15'6"
Bedroom 12' x 12'10"
Bedroom 12'9" x 7'10"
Bedroom 12'4" x 12'3"
5pc Bathroom 9'10" x 12'3"
3pc Ensuite bath 6'3" x 7'9"
Utility room 10'1" x 17'8"
Laundry room 9'8" x 11'7"

Office 12'8" x 12'
Office 13'10" x 7'11"
Living room 19' x 17'
Kitchen 11'8" x 12'3"
Family room 12'2" x 11'2"
Dining room 14'2" x 10'5"
2pc Bathroom 5'11" x 4'5"

Listing Presented By:



Originally Listed by:
Stilhavn Real Estate Services



Royal

Lepage Parkside Realty

PO Box 930; 9925 Main St,
Summerland, BC,

Phone: (250) 462-4888
info@joepeters.ca

The property information on this website is derived from the Canadian Real Estate Association's Data Distribution Facility (DDF®). DDF® references real estate listings held by various brokerage firms and franchisees. The accuracy of information is not guaranteed and should be independently verified. The trademarks REALTOR®, REALTORS® and the REALTOR® logo are controlled by The Canadian Real Estate Association (CREA) and identify real estate professionals who are members of CREA. The trademarks MLS®, Multiple Listing Service® and the associated logos are owned by CREA and identify the quality of services provided by real estate professionals who are members of CREA.