



975 Academy Way 210 Kelowna British Columbia

\$464,900

Closest Building to the University! With a few stores on the ground level, this conveniently located condo is perfect for the University Student. This 2 bed condo (or 1 plus den) with 2 full bathrooms is vacant and ready for possession! SS appliances and vinyl plank flooring- carpet in the second bedroom/den. Patio doors and patio open to back side, with some green space. Freshly painted and professionally cleaned! Low strata fee, 1 secure parking spot and a storage locker. (id:6769)

Living room 13'6" x 10'

Kitchen 13'6" x 8'1"

Full bathroom 6'3" x 6'6"

Laundry room 2'10" x 3'1"

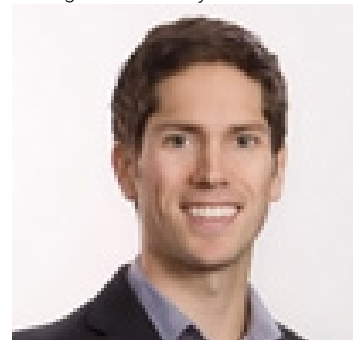
Foyer 6'11" x 6'5"

Bedroom 8'5" x 10'8"

Full ensuite bathroom 8'5" x 5'2"

Primary Bedroom 9'9" x 12'5"

Listing Presented By:



Originally Listed by:
Royal LePage Kelowna



Royal

Lepage Parkside Realty

PO Box 930; 9925 Main St,
Summerland, BC,

Phone: (250) 462-4888
info@joepeters.ca

The property information on this website is derived from the Canadian Real Estate Association's Data Distribution Facility (DDF®). DDF® references real estate listings held by various brokerage firms and franchisees. The accuracy of information is not guaranteed and should be independently verified. The trademarks REALTOR®, REALTORS® and the REALTOR® logo are controlled by The Canadian Real Estate Association (CREA) and identify real estate professionals who are members of CREA. The trademarks MLS®, Multiple Listing Service® and the associated logos are owned by CREA and identify the quality of services provided by real estate professionals who are members of CREA.