



2163 Kentucky Crescent Kelowna British Columbia

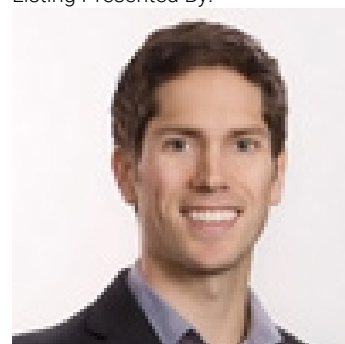
\$1,525,000

Welcome to this stunning new custom-built home, offering over 4,000 sqft of thoughtfully designed living space that exudes elegance and functionality - OFFERING PPT INCLUDED! Wide plank flooring flows throughout along with 10ft high ceilings, setting the stage for the high-end finishes you'll find at every turn. The main floor is a host's dream, featuring a gourmet kitchen equipped with Fisher & Paykel appliances, ample counter/storage space, a wine fridge, dual ovens, a pot filler, and a secondary butler's pantry to keep the space pristine while entertaining. Large windows frame breathtaking views, seamlessly connecting the indoors to the upper-level balconies and the flat, pool-sized backyard below. The layout is ideal for families, with three upper-floor bedrooms, including a luxurious primary suite with a retreat-like ensuite, a spacious walk-in closet, and a private balcony with incredible views. Downstairs, flexibility is top of mind with a setup perfect for multigenerational living or income potential. The space is designed for easy conversion to a bright, self-contained 2-bedroom suite with kitchen rough-ins in place. Even with a suite, the home retains a dedicated rec room for a gym, playroom, or theater. Nestled on a quiet street & with ample parking, this home offers peace and privacy while being near Tower Ranch Golf Course, scenic trails, and all the Okanagan has to offer. Don't miss the chance to call this exquisite home yours - schedule your viewing today! (id:6769)

5pc Ensuite bath 10' x 8'8"
 4pc Bathroom 7'5" x 9'2"
 Storage 10' x 6'5"
 Primary Bedroom 13'4" x 19'5"
 Bedroom 12'9" x 15'1"
 Bedroom 11'1" x 13'
 Utility room 26' x 7'5"
 Recreation room 18' x 10'

Bedroom 11'11" x 13'0"
 4pc Bathroom 8'6" x 8'6"
 Mud room 9'5" x 7'5"
 Foyer 7'0" x 15'5"
 Laundry room 6'11" x 8'6"
 3pc Bathroom 10' x 4'11"
 Bedroom 9'11" x 13'7"
 Pantry 11'5" x 11'

Listing Presented By:



Originally Listed by:
 Royal LePage Kelowna



Royal

Lepage Parkside Realty

PO Box 930; 9925 Main St,
 Summerland, BC,

Phone: (250) 462-4888
 info@joepeters.ca

The property information on this website is derived from the Canadian Real Estate Association's Data Distribution Facility (DDF®). DDF® references real estate listings held by various brokerage firms and franchisees. The accuracy of information is not guaranteed and should be independently verified. The trademarks REALTOR®, REALTORS® and the REALTOR® logo are controlled by The Canadian Real Estate Association (CREA) and identify real estate professionals who are members of CREA. The trademarks MLS®, Multiple Listing Service® and the associated logos are owned by CREA and identify the quality of services provided by real estate professionals who are members of CREA.

Living room 16'3" x 18'3"

Dining room 13'4" x 11'10"

Bedroom 12'9" x 15'1"