

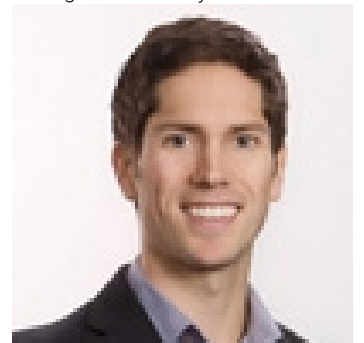


5648 PROMONTORY Road 22 Chilliwack British Columbia

\$699,900

Welcome to the Gables at Copper Creek! This spacious end unit townhouse with a yard is beautiful inside and out. Enough space for a family! At nearly 2000 sq ft, it features 3 bedrooms and 2 bathrooms up (3 bath total), primary w/ walk in closet AND ensuite. The laundry is conveniently located upstairs. The main floor has a large living room w/ gas fireplace, open kitchen and dining room plus the bonus of a large den, ideal for a play room, office or even a 4th bed. Walk out your main living space to a private fenced yard & covered sitting area. The basement features a large, open rec-room & its own half bath. 4 parking spaces (2 covered) in your double garage. Walk to the Promontory Hillside Plaza or Hike the many trails this neighborhood has to offer. 2 pets allowed. Call and book today! * PREC - Personal Real Estate Corporation (id:6769)

Listing Presented By:



Originally Listed by:
RE/MAX Nyda Realty Inc.



Royal

Lepage Parkside Realty

PO Box 930; 9925 Main St,
Summerland, BC,

Phone: (250) 462-4888
info@joepeters.ca

The property information on this website is derived from the Canadian Real Estate Association's Data Distribution Facility (DDF®). DDF® references real estate listings held by various brokerage firms and franchisees. The accuracy of information is not guaranteed and should be independently verified. The trademarks REALTOR®, REALTORS® and the REALTOR® logo are controlled by The Canadian Real Estate Association (CREA) and identify real estate professionals who are members of CREA. The trademarks MLS®, Multiple Listing Service® and the associated logos are owned by CREA and identify the quality of services provided by real estate professionals who are members of CREA.