



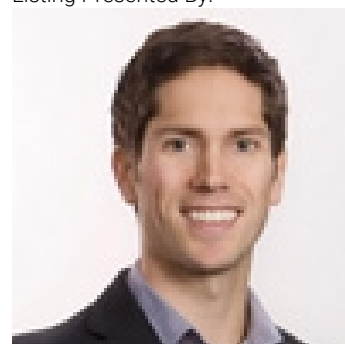
2302 Lakeview Drive Blind Bay British Columbia

\$1,049,000

Beautiful custom home built in 2023 boasting stunning lake & mountain views. Built to maximize the views there is a large entrance that flows into an open concept great room, featuring a 10 ft ceiling, natural light streams through the double wide glass patio doors leading out to a huge 42 ft long deck with beautiful cedar pillars & ceiling, n/g hookup, the perfect place to entertain. The kitchen designed by Renaissance of Salmon Arm features a large island, quartz counters, professional style appliances, 5 burner gas stove, a skylight for extra natural light & generous walk in pantry. The dining area has glass patio doors leading out to the deck. The master bedroom with patio door leading onto the deck has a large ensuite bathroom with skylight, & walk in closet. Also on the main floor you will find a 1/2 bathroom, den/office & mud room leading out to the double car garage which is equipped with an EV charging plug. The basement features a large family room with glass doors leading out to the large 42 ft long patio, two further bedrooms, a full bathroom, laundry room which has a rough in for a sink, a large recreation/storage room, could be used as a bedroom. This home has so many high end finishes, too many to mention! Outside is mostly landscaped, room for your RV! Realtor deems all information to be correct yet does not guarantee this nor are we liable in any way for any mistakes, errors, or omissions. All measurements are approximate. Buyer to verify all information. (id:6769)

- Utility room 15'3" x 7'2"
- Storage 25' x 20'
- Laundry room 10'6" x 7'9"
- 4pc Bathroom 8' x 8'1"
- Bedroom 13' x 11'2"
- Bedroom 13' x 11'10"
- Family room 13'8" x 16'2"
- Mud room 5'4" x 6'5"
- 4pc Ensuite bath 8'8" x 9'7"
- Primary Bedroom 13'9" x 11'10"
- 2pc Bathroom 8'4" x 4'10"
- Den 9'10" x 11'
- Foyer 7'5" x 7'10"
- Great room 18' x 16'
- Pantry 6'10" x 5'4"
- Dining room 10'2" x 11'7"

Listing Presented By:



Originally Listed by:
Homelife Salmon Arm Realty.Com



Royal

Lepage Parkside Realty

PO Box 930; 9925 Main St,
Summerland, BC,

Phone: (250) 462-4888
info@joepeters.ca

The property information on this website is derived from the Canadian Real Estate Association's Data Distribution Facility (DDF®). DDF® references real estate listings held by various brokerage firms and franchisees. The accuracy of information is not guaranteed and should be independently verified. The trademarks REALTOR®, REALTORS® and the REALTOR® logo are controlled by The Canadian Real Estate Association (CREA) and identify real estate members of CREA. The trademarks Multiple Listing Service® and the associated logos are owned by CREA and identify the quality of services provided by real estate professionals who are members of CREA.

Other 7'11" x 3'10"

Kitchen 13'2" x 12'7"