



# 241 Twin Lakes Road Enderby British Columbia

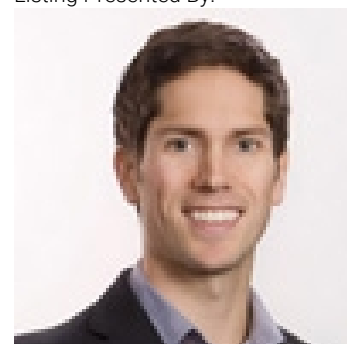
\$2,300,000

Welcome to this stunning acreage estate, offering unobstructed views of the Enderby Cliffs, Shuswap River, and vast farmlands. The interior showcases exquisite craftsmanship, starting with the vaulted ceilings in the living area adorned with beamworks and dormers. The kitchen & dining area are designed to impress. The bumped-out dining space offers a unique ambiance, while the kitchen features an island made of white oak with quartz countertops. The coffered ceiling and bronze light fixtures add sophistication, and the coffee and wine bar, as well as the butler pantry, provide convenience and luxury. The primary bedroom features a full ensuite with a glass encased shower, dual shower heads, floating countertops with a dual vanity, and the walk-in closet adds to the allure of this retreat-like space. Completing the main level is a 2nd bedroom, full bath, large laundry & boot room with access to the triple bay garage. Descend the extra-wide staircase to the basement, where you'll discover a cozy wood-burning insert, the perfect spot to unwind. The 3rd & 4th bdrms each have their own full bath, a spacious games room awaits, providing an ideal space for the kids to hang out plus there is a flex room. The triple bay garage with EV plug ensures ample space for vehicles and storage. Additionally, a double bay detached shop with a 28 ft & 35 ft bays and RV hookups providing ample storage for your vehicles. A truly exceptional home where luxury & comfort meet amidst the beauty of nature. (id:6769)

- Storage 13'10" x 16'7"
- Recreation room 13'4" x 33'4"
- 3pc Bathroom 9'8" x 5'0"
- Bedroom 13'10" x 15'0"
- Storage 9'5" x 4'8"
- Gym 13'10" x 23'5"
- 3pc Bathroom 7'8" x 8'6"
- Bedroom 13'10" x 12'7"
- 4pc Ensuite bath 7'9" x 22'4"
- Primary Bedroom 16'0" x 19'9"
- Pantry 7'6" x 10'7"
- Kitchen 14'5" x 19'7"
- Dining room 13'10" x 9'3"
- Living room 20'1" x 26'6"
- 3pc Bathroom 9'11" x 7'4"
- Bedroom 14'0" x 12'7"
- 4pc Ensuite bath 7'9" x 22'4"
- Primary Bedroom 16'0" x 19'9"
- Pantry 7'6" x 10'7"

The property information on this website is derived from the Canadian Real Estate Association's Data Distribution Facility (DDF®). DDF® references real estate listings held by various brokerage firms and franchisees. The accuracy of information is not guaranteed and should be independently verified. The trademarks REALTOR®, REALTORS® and the REALTOR® logo are controlled by The Canadian Real Estate Association (CREA) and identify real estate professionals who are members of CREA. The trademarks Multiple Listing Service® and the associated logos are owned by CREA and identify the quality of services provided by real estate professionals who are members of CREA.

Listing Presented By:



Originally Listed by:  
Real Broker B.C. Ltd

<http://www.chrisholmrealestate.ca/>



Royal

**Lepage Parkside Realty**

PO Box 930; 9925 Main St,  
Summerland, BC,

Phone: (250) 462-4888  
info@joepeters.ca

Family room 24'2" x 31'3"

Foyer 13'6" x 6'7"

Mud room 15'3" x 14'4"