



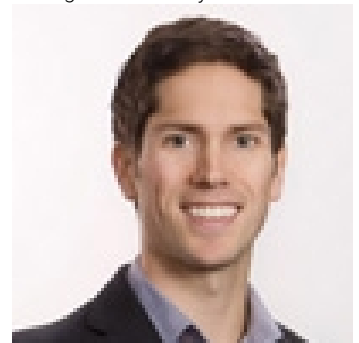
2510 Highlands Drive Blind Bay British Columbia

\$1,249,999

This executive 4-bedroom rancher offers the perfect blend of luxury & functionality. Nestled in the heart of Blind Bay, this 3,000 square foot rancher is an embodiment of modern living. With a triple garage and a picturesque lake view, it's not just a home; it's a lifestyle upgrade. Step inside and experience the spacious open-concept design that floods the interior with natural light. Oversized windows invite the outdoors in, creating a seamless connection with the stunning surroundings. The main floor features 9 and 12-foot ceilings, setting the stage for an airy and expansive atmosphere. The main floor offers a private master bedroom complete with a 5-piece ensuite bathroom and a walk-in closet. An additional bedroom on the main floor, along with another full bathroom, ensures comfort for family and guests. Descend to the basement, where epoxy concrete flooring adds durability and style. Discover two more bedrooms, a den, an oversized family room, and a full bathroom. Step onto your custom stone-covered deck and soak in the awe-inspiring views. It's an outdoor oasis equipped with an integrated stereo system, perfect for hosting memorable gatherings. Maintaining the lush landscaping is effortless with a fully automated 7-zone irrigation system. All measurements are approximate. Above information is from sources believed to be reliable, but should not be relied upon without verification. The listing agent assumes no responsibility for its accuracy. (id:6769)

- Utility room 18' x 7'10"
- Recreation room 32'9" x 22'11"
- Den 5'10" x 8'8"
- Bedroom 12'4" x 12'3"
- Bedroom 10'3" x 16'2"
- 4pc Bathroom 5'10" x 7'9"
- Other 6'8" x 7'5"
- Primary Bedroom 12'5" x 15'7"
- Laundry room 11'8" x 7'4"
- Kitchen 11'5" x 19'7"
- Other 27'6" x 21'11"
- Foyer 6'5" x 8'2"
- Dining room 11'5" x 10'8"
- Bedroom 10'11" x 9'11"
- 5pc Ensuite bath 5'11" x 13'7"
- 3pc Bathroom

Listing Presented By:



Originally Listed by:
Royal LePage Access Real Estate

<http://www.salmonarmproperties.com/>



Royal

Lepage Parkside Realty

PO Box 930; 9925 Main St,
Summerland, BC,

Phone: (250) 462-4888
info@joepeters.ca

The property information on this website is derived from the Canadian Real Estate Association's Data Distribution Facility (DDF®). DDF® references real estate listings held by various brokerage firms and franchisees. The accuracy of information is not guaranteed and should be independently verified. The trademarks REALTOR®, REALTORS® and the REALTOR® logo are controlled by The Canadian Real Estate Association (CREA) and identify real estate professionals who are members of CREA. The trademarks Multiple Listing Service® and the associated logos are owned by CREA and identify the quality of services provided by real estate professionals who are members of CREA.

Living room 15'2" x 19'7"