



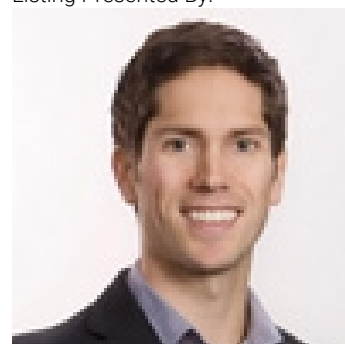
2602 Golf Course Drive Blind Bay British Columbia

\$998,000

Elegant, spacious, gorgeous, upgraded, 3300 sq ft custom-built home backing onto the 12th green with the right amount of privacy and space. This 3 br, 3 ba + den+ hobby room home located on prestigious Golf Course Dr rests on a beautifully landscaped 0.3 acre lot. Soaring cathedral ceilings and huge windows throughout provide airy spaciousness and a peaceful link to nature. An impressive open concept design with designer touches throughout proceeds from a magnificent grand foyer to large dining room with 3-way fireplace, comfortable living room and kitchen all arranged perfectly. The bright and spacious kitchen has been upgraded with quartz countertops, granitstone sinks, and stainless steel designer appliances complimenting solid oak cabinetry and large pantry. Multiple walkouts lead to a massive full-width deck and a stunning, mature park-like backyard. An enormous master suite features jet tub, quartz, walk-in shower and closet and walkout to deck. Second main floor bedroom offers views of Shuswap Lake and Copper Island. Huge rec room offers more views outback. Basement includes rec room, card room, office, bedroom, hobby room, bath, wine-making room and several storage areas. Upgrades include new roof, new appliances and countertops in kitchen, newer furnace and HWT, newer central vacuum, air conditioner, new flagstone sitting area, resurfaced driveway, in-ground irrigation, alarm system and new Duradeck. Meticulously cared for by 1 owner. Book your showing today ! (id:6769)

- Foyer 10'9" x 10'3"
- Recreation room 23'10" x 17'3"
- Utility room 11'3" x 5'11"
- Dining nook 10'7" x 7'9"
- Storage 12'4" x 10'2"
- Full bathroom 9'5" x 4'11"
- Storage 10'11" x 5'5"
- Foyer 13'8" x 10'11"
- Storage 9'11" x 12'10"
- Laundry room 6'10" x 7'0"
- Storage 13'1" x 7'0"
- Bedroom 14'11" x 15'4"
- Full bathroom 6'0" x 6'0"
- Other 13'11" x 5'5"

Listing Presented By:



Originally Listed by:
RE/MAX Shuswap Realty



Royal

Lepage Parkside Realty

PO Box 930; 9925 Main St,
Summerland, BC,

Phone: (250) 462-4888
info@joepeters.ca

The property information on this website is derived from the Canadian Real Estate Association's Data Distribution Facility (DDF®). DDF® references real estate listings held by various brokerage firms and franchisees. The accuracy of information is not guaranteed and should be independently verified. The trademarks REALTOR®, REALTORS® and the REALTOR® logo are controlled by The Canadian Real Estate Association (CREA) and identify real estate professionals who are members of CREA. The trademarks Multiple Listing Service® and the associated logos are owned by CREA and identify the quality of services provided by real estate professionals who are members of CREA.

Bedroom 14'8" x 9'1"

Hobby room 15'5" x 10'2"

Office 7'5" x 9'9"

Full ensuite bathroom 12'2" x 13'7"

Primary Bedroom 14'1" x 16'0"