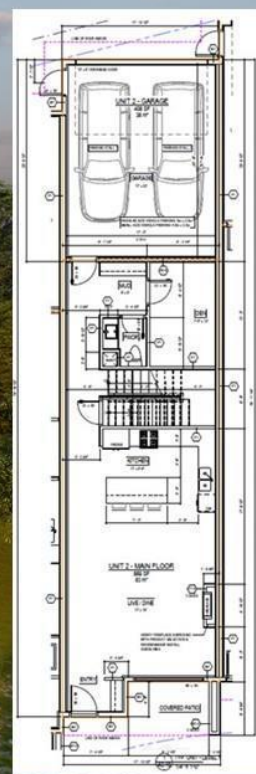




REALTOR



732 Coopland Crescent 3 Kelowna British Columbia

\$1,175,000

LOCATION - LOCATION - LOCATION, South Pandosy at it's finest!!! Welcome to 732 Coopland Crescent, where each 2,000+ sq. ft. home in this modern complex comes with an attached side-by-side double garage (roughed for EV Charger), front & rear roof-top decks (roughly 1,000 sq. ft. total, plumbed for hot-tub & outdoor kitchen). Quality contemporary finishings throughout this 3 bedroom + den, 3 bathroom, home with 10 ft. ceilings (on the main level), plus a laundry room & decent storage. For the ultimate SOPA lifestyle on a quiet crescent with lovely city/mountain/valley views, please consider making one of these units your new home. Estimated to be completed by the end of September 2024, GST will be applicable on top of the purchase price. (id:6769)

Other 8'0" x 8'6"

4pc Ensuite bath 13'7" x 6'10"

Primary Bedroom 17'0" x 12'6"

Laundry room 5'4" x 8'10"

5pc Bathroom 10'6" x 5'10"

Bedroom 10'6" x 10'6"

Bedroom 10'6" x 10'6"

Den 7'6" x 12'0"

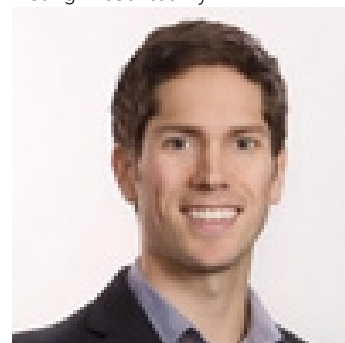
Mud room 9'0" x 6'0"

2pc Bathroom 6'0" x 5'0"

Kitchen 17'0" x 8'6"

Living room 17'0" x 19'0"

Listing Presented By:



Originally Listed by:
RE/MAX Kelowna

<http://www.timstanfield.com/>



Royal

Lepage Parkside Realty

PO Box 930; 9925 Main St,
Summerland, BC,

Phone: (250) 462-4888
info@joepeters.ca

The property information on this website is derived from the Canadian Real Estate Association's Data Distribution Facility (DDF®). DDF® references real estate listings held by various brokerage firms and franchisees. The accuracy of information is not guaranteed and should be independently verified. The trademarks REALTOR®, REALTORS® and the REALTOR® logo are controlled by The Canadian Real Estate Association (CREA) and identify real estate professionals who are members of CREA. The trademarks MLS®, Multiple Listing Service® and the associated logos are owned by CREA and identify the quality of services provided by real estate professionals who are members of CREA.