



3550 Woodsdale Road 304 Lake Country British Columbia

\$449,000

For more information click the brochure button blow. Discover the charm of Emerald Point in Lake Country with this stunning 2-bedroom, 2-bathroom condo, situated on the bright and airy 3rd floor. This corner unit offers captivating views of the pool and has been recently updated with modern flooring and fresh paint. Enjoy year-round comfort with geothermal heating, cooling, and water included in the strata fees. The condo also comes with two parking spaces—one in the secure underground garage and one outdoors. Residents can take advantage of a range of amenities, including a swimming pool, hot tub, sauna, exercise room, and an amenities room with a kitchen and deck perfect for entertaining. Located near the beach at Wood Lake, Reiswig Park, the Okanagan Rail Trail, tennis courts, and various shopping options, this condo provides a blend of luxury, convenience, and an active lifestyle. (id:6769)

Other 10'6" x 8'0"

Laundry room 7'0" x 5'5"

Kitchen 14'0" x 7'8"

3pc Bathroom 12'10" x 10'11"

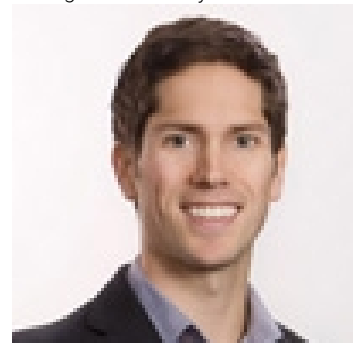
Bedroom 9'3" x 12'6"

Living room 29'6" x 14'2"

4pc Ensuite bath 7'0" x 8'3"

Primary Bedroom 10'4" x 7'0"

Listing Presented By:



Originally Listed by:
Easy List Realty

<http://www.easylistrealty.ca/>



Royal

Lepage Parkside Realty

PO Box 930; 9925 Main St,
Summerland, BC,

Phone: (250) 462-4888
info@joepeters.ca

The property information on this website is derived from the Canadian Real Estate Association's Data Distribution Facility (DDF®). DDF® references real estate listings held by various brokerage firms and franchisees. The accuracy of information is not guaranteed and should be independently verified. The trademarks REALTOR®, REALTORS® and the REALTOR® logo are controlled by The Canadian Real Estate Association (CREA) and identify real estate professionals who are members of CREA. The trademarks MLS®, Multiple Listing Service® and the associated logos are owned by CREA and identify the quality of services provided by real estate professionals who are members of CREA.