

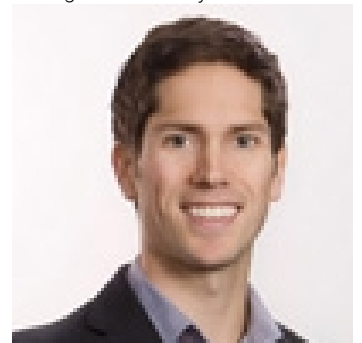


# 3095 MOUNTAIN VIEW Road McBride British Columbia

\$165,000

Fabulous piece of property. Very prime. Great views of the surrounding Rocky Mountains. Close to Village of McBride. Currently used as a hayfield. Build your own home where you want. Trailer on property not included but is negotiable as an extra. Mountain View is a year round road, and driveway provides easy private access. Land is level. This won't last long! (id:6769)

Listing Presented By:



Originally Listed by:  
Royal LePage Aspire Realty



**Royal**

**Lepage Parkside Realty**

PO Box 930; 9925 Main St,  
Summerland, BC,

Phone: (250) 462-4888  
info@joepeters.ca

The property information on this website is derived from the Canadian Real Estate Association's Data Distribution Facility (DDF®). DDF® references real estate listings held by various brokerage firms and franchisees. The accuracy of information is not guaranteed and should be independently verified. The trademarks REALTOR®, REALTORS® and the REALTOR® logo are controlled by The Canadian Real Estate Association (CREA) and identify real estate professionals who are members of CREA. The trademarks MLS®, Multiple Listing Service® and the associated logos are owned by CREA and identify the quality of services provided by real estate professionals who are members of CREA.