

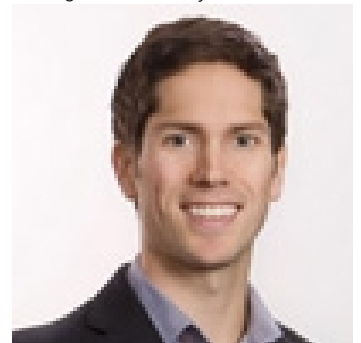


5248 GOLDSRING Place 31 Chilliwack British Columbia

\$1,249,900

EPIC VALLEY VIEWS await from the ROOFTOP PATIO of your mint new house in GOLDSRING HEIGHTS! Designed for endless ENTERTAINMENT & LUXURY, this 5 bdrm 4 bath unique home with 2 BEDROOM LEGAL SUITE is PRIME. Open concept main floor w/ 20' vaulted great room, floor-to-ceiling WINDOWS to capture the VIEWS, feature TILED FIREPLACE w/ custom built-ins, & stunning kitchen w/ extended DINING BAR, soft close shaker cabinets & walk-in pantry. Office on main, engineered hardwood throughout, & designer lighting. Step up to the INCREDIBLE ROOF TOP PATIO w/ over 100 sq ft of COVERED SPACE w/ gas rough ins & water, plus an astroturf yard OVERLOOKING THE ENTIRE VALLEY- Mission to Agassiz! Mid floor w/ 3 bdrms, incl primary suite w/ custom closet & 5 pc ensuite. WALKOUT BSMT w/ 2 bdrm suite! OPEN TO OFFERS * PREC - Personal Real Estate Corporation (id:6769)

Listing Presented By:



Originally Listed by:
RE/MAX Nyda Realty Inc. (Vedder North)

<http://www.sarahtoop.com/>



Royal

Lepage Parkside Realty

PO Box 930; 9925 Main St,
Summerland, BC,

Phone: (250) 462-4888
info@joepeters.ca

The property information on this website is derived from the Canadian Real Estate Association's Data Distribution Facility (DDF®). DDF® references real estate listings held by various brokerage firms and franchisees. The accuracy of information is not guaranteed and should be independently verified. The trademarks REALTOR®, REALTORS® and the REALTOR® logo are controlled by The Canadian Real Estate Association (CREA) and identify real estate professionals who are members of CREA. The trademarks MLS®, Multiple Listing Service® and the associated logos are owned by CREA and identify the quality of services provided by real estate professionals who are members of CREA.