



251 6th Street 312 Salmon Arm British Columbia

\$439,999

RARE OFFERING - ONCE IN A WHILE A LAKE VIEW..... Top floor corner unit comes for sale in popular 55+ MACINTOSH GROVE! Don't miss your opportunity! This conveniently located 1300+ sq. ft. apartment boasts 2 bedrooms, 2 baths, primary bedroom with walk-in closet & ensuite, spacious living room with lots of windows, lots of oak cabinets in the kitchen plus adjoining the kitchen is a nook with door onto wrap around covered deck, formal dining with sliding doors onto covered deck to enjoy the scenic lake, mountain & city views, large laundry room & wide hallway entry into the home. Building amenities include RV Parking, Gathering common room with a kitchen & games, , exercise room, workshop, storage locker & underground parking. Within walking distance of downtown or if you need public transit, it is close-by. (id:6769)

Dining room 9'11" x 9'11"

Laundry room 9'6" x 11'7"

3pc Bathroom 6'3" x 7'1"

Bedroom 10'0" x 11'8"

3pc Ensuite bath 5'11" x 11'3"

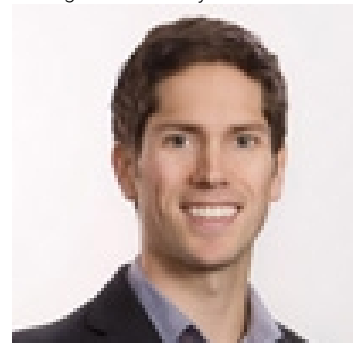
Primary Bedroom 14'10" x 11'0"

Living room 18'6" x 18'10"

Dining room 11'2" x 11'9"

Kitchen 11'2" x 8'11"

Listing Presented By:



Originally Listed by:
RE/MAX Shuswap Realty

<http://www.lindaclarke.ca/>



Royal

Lepage Parkside Realty

PO Box 930; 9925 Main St,
Summerland, BC,

Phone: (250) 462-4888
info@joepeters.ca

The property information on this website is derived from the Canadian Real Estate Association's Data Distribution Facility (DDF®). DDF® references real estate listings held by various brokerage firms and franchisees. The accuracy of information is not guaranteed and should be independently verified. The trademarks REALTOR®, REALTORS® and the REALTOR® logo are controlled by The Canadian Real Estate Association (CREA) and identify real estate professionals who are members of CREA. The trademarks MLS®, Multiple Listing Service® and the associated logos are owned by CREA and identify the quality of services provided by real estate professionals who are members of CREA.