

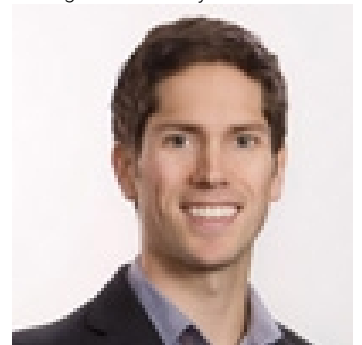


3240 10TH Avenue Prince George British Columbia

\$25

High traffic high exposure Retail/Office location with tons of parking. 8477 sq ft of wide-open space to give you a blank canvas. Loading dock and large electronic signage. Parking lot is great to get in and out of. Neighboring businesses include Burger King, Wendy's, Triple O's Liquor Store to name a few. Vacant quick possession possible. * PREC - Personal Real Estate Corporation (id:6769)

Listing Presented By:



Originally Listed by:
Royal LePage Aspire Realty

<http://www.clintdahl.ca/>



Royal

Lepage Parkside Realty

PO Box 930; 9925 Main St,
Summerland, BC,

Phone: (250) 462-4888
info@joepeters.ca

The property information on this website is derived from the Canadian Real Estate Association's Data Distribution Facility (DDF®). DDF® references real estate listings held by various brokerage firms and franchisees. The accuracy of information is not guaranteed and should be independently verified. The trademarks REALTOR®, REALTORS® and the REALTOR® logo are controlled by The Canadian Real Estate Association (CREA) and identify real estate professionals who are members of CREA. The trademarks MLS®, Multiple Listing Service® and the associated logos are owned by CREA and identify the quality of services provided by real estate professionals who are members of CREA.