



3260 CHRISTIAN VALLEY ROAD Westbridge British Columbia

\$799,000

Set on just over 5.5 acres of flat land, this property boasts a 35 by 40 shop with large doors and high ceilings, perfect for various uses. The well-designed main house offers a great layout, complemented by two decks ideal for relaxation and entertainment. The meticulously landscaped yard features a gazebo and an abundance of gardens, creating a picturesque setting. Enjoy stunning mountain and valley views that enhance the property's appeal. Additionally, the presence of a separate guest house adds versatility and value to the estate. With its practical layout, scenic views, and functional amenities, this property presents a unique opportunity for buyers looking for both aesthetic charm and practicality in their investment. (id:6769)

Bedroom 13'11 x 10'11

Recreation room 12'2 x 24'10

Pantry 11'10 x 6'2

Storage 12'2 x 12'1

Storage 8'4 x 9'10

Primary Bedroom 12'2 x 13'9

Bedroom 12'2 x 7'10

Bedroom 9'6 x 12'1

Bedroom 6'8 x 7'9

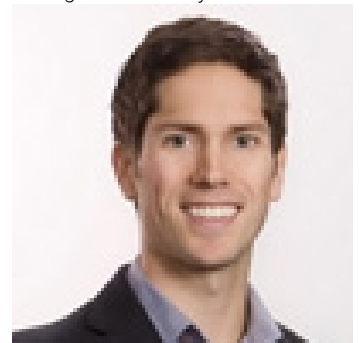
Full bathroom Measurements not available

Full bathroom Measurements not available

Kitchen 11'8 x 7'7

Living room 19'7 x 47'1

Listing Presented By:



Originally Listed by:
RE/MAX Four Seasons (Grand
Forks)



Royal

Lepage Parkside Realty

PO Box 930; 9925 Main St,
Summerland, BC,

Phone: (250) 462-4888
info@joepeters.ca

The property information on this website is derived from the Canadian Real Estate Association's Data Distribution Facility (DDF®). DDF® references real estate listings held by various brokerage firms and franchisees. The accuracy of information is not guaranteed and should be independently verified. The trademarks REALTOR®, REALTORS® and the REALTOR® logo are controlled by The Canadian Real Estate Association (CREA) and identify real estate professionals who are members of CREA. The trademarks MLS®, Multiple Listing Service® and the associated logos are owned by CREA and identify the quality of services provided by real estate professionals who are members of CREA.