



3550 Redecopp Road Lake Country British Columbia

\$1,500,000

INVESTOR'S ALERT!! ...LAKES AND MOUNTAINS ABOUND... Prime .46 acre parcel of flat developable land in Spectacular Lake Country BC. This locale is being revitalized and is going to offer new opportunities to folks wanting the Ultimate Okanagan Lifestyle. Walking distance to Wood Lake Beach, Reiswig and Beasley Parks. Steps to the Rail Trail which is approx 50 kms long from Kelowna to Vernon. This home has been renovated and offers an open plan with flat access to the outdoors which boasts a refreshing swimming pool for summer entertaining into the sunsets. There is a huge powered shop with a suite. Opportunity is knocking with this small acreage!! The Official City Plan recognizes high density for this locale which allows for townhouse, duplex development. (id:6769)

4pc Bathroom 9'10" x 5'1"

4pc Ensuite bath 17'8" x 4'11"

Bedroom 14'0" x 7'0"

Bedroom 13'3" x 12'0"

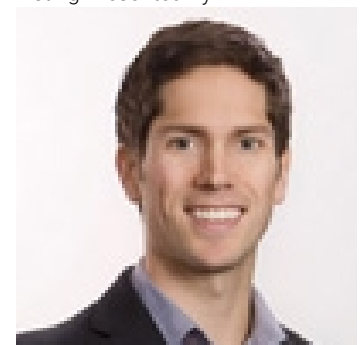
Primary Bedroom 13'0" x 11'5"

Living room 17'5" x 13'0"

Dining room 10'5" x 16'0"

Kitchen 15'5" x 12'10"

Listing Presented By:



Originally Listed by:
Coldwell Banker Horizon Realty



Royal

Lepage Parkside Realty

PO Box 930; 9925 Main St,
Summerland, BC,

Phone: (250) 462-4888
info@joepeters.ca

The property information on this website is derived from the Canadian Real Estate Association's Data Distribution Facility (DDF®). DDF® references real estate listings held by various brokerage firms and franchisees. The accuracy of information is not guaranteed and should be independently verified. The trademarks REALTOR®, REALTORS® and the REALTOR® logo are controlled by The Canadian Real Estate Association (CREA) and identify real estate professionals who are members of CREA. The trademarks MLS®, Multiple Listing Service® and the associated logos are owned by CREA and identify the quality of services provided by real estate professionals who are members of CREA.