



# 385 Matheson Road Okanagan Falls British Columbia

\$2,650,000

Boutique Winery opportunity now available for sale in the prestigious Okanagan Falls area. 8.896 acre parcel planted out to high producing vineyard. Approximately 5 acres planted to mix of Pinot Blanc (primary crop), Pinot Noir, and Cabernet Sauvignon. The property has a large greenhouse. Sale includes all assets. There may be additional grapes available via neighboring parcel. The property has a 3 bedroom, 2.5 bathroom 2600+ sq.ft. residence, great for an owner-occupier or farm help. Additional structures include a 2000 sq.ft. primary greenhouse and a 400 sq.ft. greenhouse. Additional equipment for farm operations included. Vines were originally planted in 1986, and the property has potential to produce and distribute 10,000 cases or more of wine, plus bulk wine options. Several water licenses for domestic + irrigation. (id:6769)

3pc Bathroom 1' x 1'

Bedroom 14' x 9'

Laundry room 16' x 12'

Family room 14' x 14'

Bedroom 13' x 12'

Dining room 12' x 11'

2pc Bathroom 1' x 1'

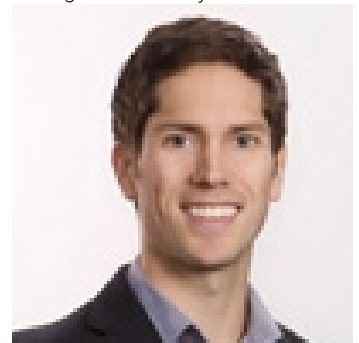
2pc Ensuite bath 1' x 1'

Kitchen 18' x 12'

Living room 16' x 16'

Primary Bedroom 12' x 12'

Listing Presented By:



Originally Listed by:  
Sotheby's International Realty  
Canada

<http://www.scottmarshallhomes.com/>



Royal

**Lepage Parkside Realty**

PO Box 930; 9925 Main St,  
Summerland, BC,

Phone: (250) 462-4888  
info@joepeters.ca

The property information on this website is derived from the Canadian Real Estate Association's Data Distribution Facility (DDF®). DDF® references real estate listings held by various brokerage firms and franchisees. The accuracy of information is not guaranteed and should be independently verified. The trademarks REALTOR®, REALTORS® and the REALTOR® logo are controlled by The Canadian Real Estate Association (CREA) and identify real estate professionals who are members of CREA. The trademarks MLS®, Multiple Listing Service® and the associated logos are owned by CREA and identify the quality of services provided by real estate professionals who are members of CREA.