



390 Asher Road Kelowna British Columbia

\$1,399,000

LAND ASSEMBLY OPPORTUNITY!! Developers and investors here's the opportunity to acquire this property along with four others. This assembly consists of five prime properties zoned for future development. Acquiring all five properties would provide a combined land area approximately 1.24 acres. There is the possibility of putting a residential building up to 6 storey considering all requirements are met. This property must be acquired with 410, 420, 430 and 440 Asher Road. This location is conveniently located near Rutland Sports Field, YMCA, Rutland Elementary and Secondary, transit, 10 minutes to UBCO and the Airport and 15 minutes to Downtown Kelowna. Come take a look and be a part of the early stages of development in this rapidly growing community. (id:6769)

Full bathroom Measurements not available

Bedroom 12'0" x 11'0"

Family room 17'0" x 14'0"

Bedroom 10'0" x 9'0"

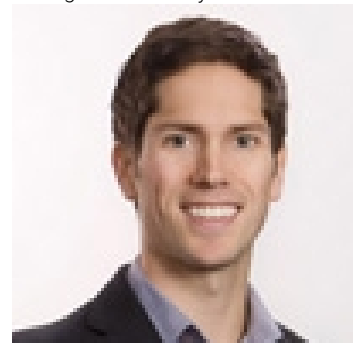
Bedroom 11'0" x 10'0"

Primary Bedroom 12'0" x 11'0"

Kitchen 16'0" x 12'0"

Living room 17'0" x 14'0"

Listing Presented By:



Originally Listed by:
eXp Realty (Kelowna)

<http://www.searchkelownaproperties.com/>



Royal

Lepage Parkside Realty

PO Box 930; 9925 Main St,
Summerland, BC,

Phone: (250) 462-4888
info@joepeters.ca

The property information on this website is derived from the Canadian Real Estate Association's Data Distribution Facility (DDF®). DDF® references real estate listings held by various brokerage firms and franchisees. The accuracy of information is not guaranteed and should be independently verified. The trademarks REALTOR®, REALTORS® and the REALTOR® logo are controlled by The Canadian Real Estate Association (CREA) and identify real estate professionals who are members of CREA. The trademarks MLS®, Multiple Listing Service® and the associated logos are owned by CREA and identify the quality of services provided by real estate professionals who are members of CREA.