



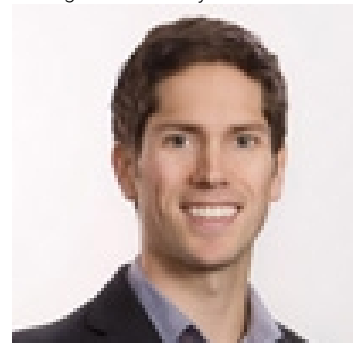
SASK • MLS®

White City Saskatchewan

\$899,900

Nestled in White City, built by Emerald Park Homes, a spacious 1/4 acre lot overlooking a serene landscape with a convenient gate providing direct access to the adjacent golf course. The backyard boasts lush greenery, including underground sprinklers for easy maintenance. Entertain guests or unwind in tranquility on the open-air deck, featuring a generous hot tub and fire pit, ideal for gatherings under the stars. The deck seamlessly transitions to an enclosed screened-in area, accessible from the kitchen, perfect for bug-free dining. Entering the abode, the main floor beckons with a lofty 9' ceiling exuding natural light. The kitchen showcases granite countertops, a sprawling 13' island with a gas range, oversized appliance drawers, and high-end appliances. A second sink and a small bar fridge augment convenience and functionality, along with walk-in pantry. The adjacent great room, wired for audio, featuring a two-way gas fireplace, offers an inviting space for relaxation or entertainment. A designated office with built-in shelving, provides a serene workspace conducive to productivity. Ascending to the second floor unveils three generous bedrooms, including a primary bedroom boasting a spacious walk-in closet, a luxurious 4-piece ensuite replete with a separate shower and a soaking tub. The remaining bedrooms share a well-appointed 4-piece bathroom and convenient 2nd floor laundry chute. Descending to the basement discover a versatile space, including 2 bedrooms and a large recreational room. A 3-piece bathroom, complete with a custom shower, offers convenience and luxury. The 3-car garage features 8' door heights, offering abundant storage and utility, equipped with a gas heater and direct access to the basement. The substantial parking is able accommodating RVs or sled trailers, perfect for recreational vehicles. With its unparalleled blend of luxury and fun...

Listing Presented By:



Originally Listed by:
Royal LePage Next Level



Royal

Lepage Parkside Realty

PO Box 930; 9925 Main St,
Summerland, BC,

Phone: (250) 462-4888
info@joepeters.ca

Primary Bedroom 13 ft x Measurements not available

3pc Bathroom Measurements not available

Office 12 ft X 10 ft, 11 in

4pc Ensuite bath Measurements not available

Office 9 ft X 10 ft

Bedroom 10 ft X 11 ft, 11 in

2pc Bathroom Measurements not available

4pc Bathroom 11 ft, 11 in X 10 ft

Living room 13 ft, 6 in X 15 ft, 7 in

Bedroom 11 ft, 11 in X 10 ft

Dining room 13 ft, 6 in X 7 ft, 7 in

The property information on this website is derived from the Canadian Real Estate Association's Data Distribution Facility (DDF®). DDF® references real estate listings held by various brokerage firms and franchisees. The accuracy of information is not guaranteed and should be independently verified. The REALTOR®, REALTORS®, and the REALTOR logo are controlled by The Canadian Real Estate Association (CREA) and identify real estate professionals who are members of CREA. The trademarks MLS®, Multiple Listing Service® and the associated logos are owned by CREA and identify the quality of services provided by real estate professionals who are members of CREA.

Family room 17 ft X 11 ft

Bedroom 15 ft X 9 ft ,8 in

Bedroom 17 ft X 9 ft ,5 in

Other 22 ft X 17 ft

Kitchen 10 ft ,3 in X 17 ft ,10 in

Laundry room Measurements not available

Sunroom 7 ft ,5 in X 13 ft