



5533 Highway 33 Other 4 Beaverdell British Columbia

\$299,000

Affordable riverfront cabin. Brand new construction and sold furnished. Leave the city behind. Fish the Kettle River and hunt in the mountains. Tons of wildlife. Barbecue. Go hiking. Get some ice-cream at the local store. No hauling the big RV over the mountains. You can just arrive and enjoy. No noise, except the chirping and scurrying of the local wildlife. Generous lot size, you have enough space to invite friends to join you. Brand new certified home with loft and finished basement on 0.33 acres of riverfront property directly on the Kettle River 3kms south of Beaverdell, 30 mins from Big White turnoff. Seller may consider some vendor financing. (id:6769)

Other 10' x 20'

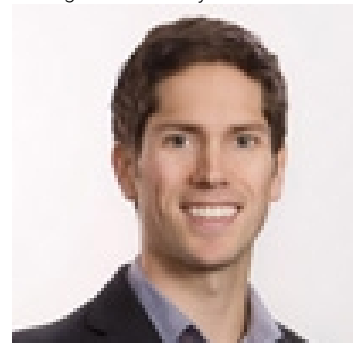
Kitchen 11' x 11'

Living room 11' x 11'

3pc Bathroom 8' x 5'

Primary Bedroom 9' x 8'

Listing Presented By:



Originally Listed by:
Landquest Realty Corporation



Royal

Lepage Parkside Realty

PO Box 930; 9925 Main St,
Summerland, BC,

Phone: (250) 462-4888
info@joepeters.ca

The property information on this website is derived from the Canadian Real Estate Association's Data Distribution Facility (DDF®). DDF® references real estate listings held by various brokerage firms and franchisees. The accuracy of information is not guaranteed and should be independently verified. The trademarks REALTOR®, REALTORS® and the REALTOR® logo are controlled by The Canadian Real Estate Association (CREA) and identify real estate professionals who are members of CREA. The trademarks MLS®, Multiple Listing Service® and the associated logos are owned by CREA and identify the quality of services provided by real estate professionals who are members of CREA.