

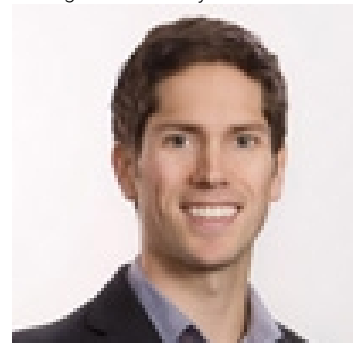


45615 BRETT Avenue 411 Chilliwack British Columbia

\$509,000

Gorgeous Penthouse suite featuring over 1100 sq.ft. of spacious living, 3 bedrooms, 2 baths and additional laundry/storage room. Open concept kitchen featuring granite countertops, island seating and newer appliances. Stone fireplace and air conditioning. Conveniently located close to all amenities including hospital, Leisure Center, Cultural Center and shopping. (id:6769)

Listing Presented By:



Originally Listed by:
eXp Realty



Royal

Lepage Parkside Realty

PO Box 930; 9925 Main St,
Summerland, BC,

Phone: (250) 462-4888
info@joepeters.ca

The property information on this website is derived from the Canadian Real Estate Association's Data Distribution Facility (DDF®). DDF® references real estate listings held by various brokerage firms and franchisees. The accuracy of information is not guaranteed and should be independently verified. The trademarks REALTOR®, REALTORS® and the REALTOR® logo are controlled by The Canadian Real Estate Association (CREA) and identify real estate professionals who are members of CREA. The trademarks MLS®, Multiple Listing Service® and the associated logos are owned by CREA and identify the quality of services provided by real estate professionals who are members of CREA.