



# 4210 White Lake Road Tappen British Columbia

\$1,799,000

MOTIVATED SELLERS! Incredibly well located 80 acres farm just off the hwy1 making it minutes from Sorrento and approximately 20 minutes from Salmon Arm. The farm consists of large shops, garage, barn, hay sheds and a home with 3 bedrooms, 2 baths with plenty of storage and beautiful sunroom overlooking farm area. The land is gently sloped and sparsely treed with hay fields and paddocks. The 80 acres is fenced with multiple access locations. There are 3 wells available and possibility for more. This beautiful property holds so much potential and is an excellent opportunity to get into the future of farming (equestrian, cattle, dairy, etc.). (id:6769)

Bedroom 13' x 11'

Storage 7' x 10'

Storage 8' x 10'

Mud room 10' x 11'

Storage 14' x 16'

3pc Bathroom 7' x 5'

Laundry room 10' x 7'

Sunroom 11' x 9'

Dining room 7' x 10'

Kitchen 10' x 10'

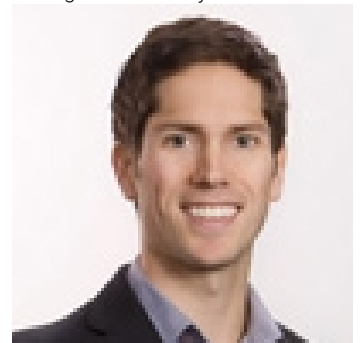
Bedroom 12' x 9'

Primary Bedroom 13' x 11'

Living room 14' x 12'

4pc Bathroom 7' x 9'

Listing Presented By:



Originally Listed by:  
eXp Realty (Kelowna)



**Royal**

**Lepage Parkside Realty**

PO Box 930; 9925 Main St,  
Summerland, BC,

Phone: (250) 462-4888  
info@joepeters.ca

The property information on this website is derived from the Canadian Real Estate Association's Data Distribution Facility (DDF®). DDF® references real estate listings held by various brokerage firms and franchisees. The accuracy of information is not guaranteed and should be independently verified. The trademarks REALTOR®, REALTORS® and the REALTOR® logo are controlled by The Canadian Real Estate Association (CREA) and identify real estate professionals who are members of CREA. The trademarks MLS®, Multiple Listing Service® and the associated logos are owned by CREA and identify the quality of services provided by real estate professionals who are members of CREA.