



4260 CHURCHILL Road Prince George British Columbia

\$439,900

Family home in great neighborhood of Edgewood Terrace featuring a 5 bedroom home, 3 bedrooms up and 2 down, 2 bathrooms, carport, single garage, RV parking and a very large fully fenced yard with only a short walk to an elementary school. Lots of parking. All measurements are approximate and buyer to verify if deemed important. (id:6769)

Recreational, Games room 23 ft X 12 ft ,6 in

Bedroom 4 10 ft ,3 in X 10 ft ,9 in

Bedroom 5 15 ft ,9 in X 8 ft ,1 in

Laundry room 13 ft ,5 in X 8 ft ,6 in

Living room 17 ft X 12 ft

Dining room 11 ft ,1 in X 9 ft

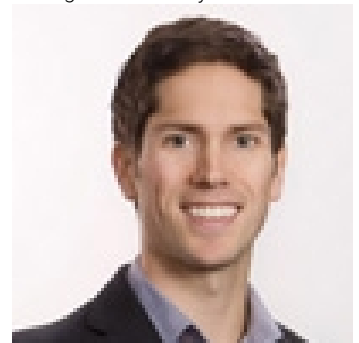
Kitchen 9 ft ,9 in X 9 ft ,4 in

Primary Bedroom 14 ft X 11 ft ,9 in

Bedroom 2 12 ft X 9 ft ,1 in

Bedroom 3 12 ft X 9 ft ,8 in

Listing Presented By:



Originally Listed by:
Royal LePage Aspire Realty



Royal

Lepage Parkside Realty

PO Box 930; 9925 Main St,
Summerland, BC,

Phone: (250) 462-4888
info@joepeters.ca

The property information on this website is derived from the Canadian Real Estate Association's Data Distribution Facility (DDF®). DDF® references real estate listings held by various brokerage firms and franchisees. The accuracy of information is not guaranteed and should be independently verified. The trademarks REALTOR®, REALTORS® and the REALTOR® logo are controlled by The Canadian Real Estate Association (CREA) and identify real estate professionals who are members of CREA. The trademarks MLS®, Multiple Listing Service® and the associated logos are owned by CREA and identify the quality of services provided by real estate professionals who are members of CREA.