

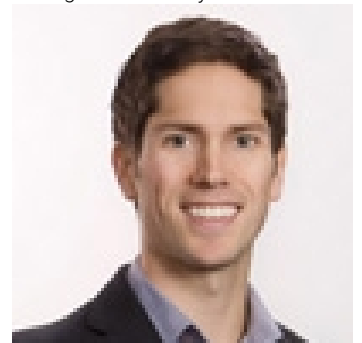


42700 MAJUBA HILL Road Chilliwack British Columbia

\$2,999,900

Almost 20 acres of prime view property in the prestigious and sought after Majuba Hill. The winding driving up to the top plateau continues to give that sense of rural relief in getting away from it all with each foot you ascent. Multiple potential building shelves, panoramic endless views over Yarrow and the entire valley to the northern mountain range. The location is only moments to town making it an ideal location to build your estate. Currently owned under a corporation that can be purchased by the wise investor (call for details). Endless opportunities for the outdoor enthusiasts with room for the entire family, all their friends and more. With nature as your neighbour, this property should be a must see on your list. Call today to arrange a private tour, no access without appt. (id:6769)

Listing Presented By:



Originally Listed by:
HomeLife Advantage Realty Ltd

<http://www.mikebrowne.ca/>



Royal

Lepage Parkside Realty

PO Box 930; 9925 Main St,
Summerland, BC,

Phone: (250) 462-4888
info@joepeters.ca

The property information on this website is derived from the Canadian Real Estate Association's Data Distribution Facility (DDF®). DDF® references real estate listings held by various brokerage firms and franchisees. The accuracy of information is not guaranteed and should be independently verified. The trademarks REALTOR®, REALTORS® and the REALTOR® logo are controlled by The Canadian Real Estate Association (CREA) and identify real estate professionals who are members of CREA. The trademarks MLS®, Multiple Listing Service® and the associated logos are owned by CREA and identify the quality of services provided by real estate professionals who are members of CREA.