

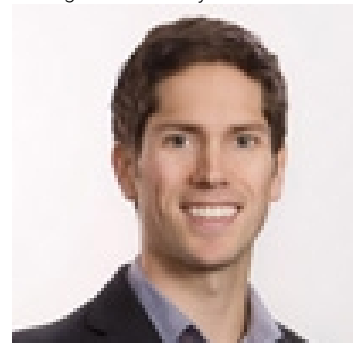


46922 SYLVAN Drive Chilliwack British Columbia

\$1,098,500

Presenting an exquisite residence in the coveted PROMONTORY neighborhood of Sardis. Meticulously constructed in 2016, with 6 Bedroom & 3 Full Washroom. Capturing breathtaking panoramic views of the Valley and mountains, the property harmoniously blends tranquility and accessibility. Proximity to schools, amenities, and nature trails enhances the appeal. The interior boasts a luxurious modern gourmet kitchen with a substantial island and contemporary lighting fixtures, Noteworthy features include a two-bedroom in law suite with a separate entrance and laundry facilities, elevating both comfort and financial flexibility. Don't miss this exceptional opportunity; it's the epitome of enduring sophistication in PROMONTORY. SAT/SUN MAY 11/12 FROM 2-4PM. Buyer's agent must be prese (id:6769)

Listing Presented By:



Originally Listed by:
eXp Realty (Branch)

<http://www.harjitheir.com/>



Royal

Lepage Parkside Realty

PO Box 930; 9925 Main St,
Summerland, BC,

Phone: (250) 462-4888
info@joepeters.ca

The property information on this website is derived from the Canadian Real Estate Association's Data Distribution Facility (DDF®). DDF® references real estate listings held by various brokerage firms and franchisees. The accuracy of information is not guaranteed and should be independently verified. The trademarks REALTOR®, REALTORS® and the REALTOR® logo are controlled by The Canadian Real Estate Association (CREA) and identify real estate professionals who are members of CREA. The trademarks MLS®, Multiple Listing Service® and the associated logos are owned by CREA and identify the quality of services provided by real estate professionals who are members of CREA.