



## 2500 97B Highway 47 Salmon Arm British Columbia

\$259,000

Come home to #47 Countryside Mobile Manor and enjoy a large, private yard and new carport. This 2014 model has the added comfort of A/C with a newer mini-split system installed in 2017, as well as 2 patio areas to enjoy outdoor living. Bedrooms are at either end of the home ensuring privacy. The primary bedroom has a walk-in closet & an ensuite with a full bath! This well cared for home is a 'must see!' (id:6769)

Laundry room 5' x 6'3"

Full ensuite bathroom 5' x 9'

Primary Bedroom 11'5" x 13'

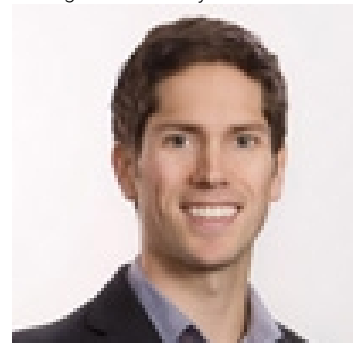
Full bathroom 7' x 5'

Bedroom 10' x 12'

Living room 14'4" x 13'

Kitchen 18'6" x 13'

Listing Presented By:



Originally Listed by:  
RE/MAX Shuswap Realty



**Royal**

**Lepage Parkside Realty**

PO Box 930; 9925 Main St,  
Summerland, BC,

Phone: (250) 462-4888  
info@joepeters.ca

The property information on this website is derived from the Canadian Real Estate Association's Data Distribution Facility (DDF®). DDF® references real estate listings held by various brokerage firms and franchisees. The accuracy of information is not guaranteed and should be independently verified. The trademarks REALTOR®, REALTORS® and the REALTOR® logo are controlled by The Canadian Real Estate Association (CREA) and identify real estate professionals who are members of CREA. The trademarks MLS®, Multiple Listing Service® and the associated logos are owned by CREA and identify the quality of services provided by real estate professionals who are members of CREA.