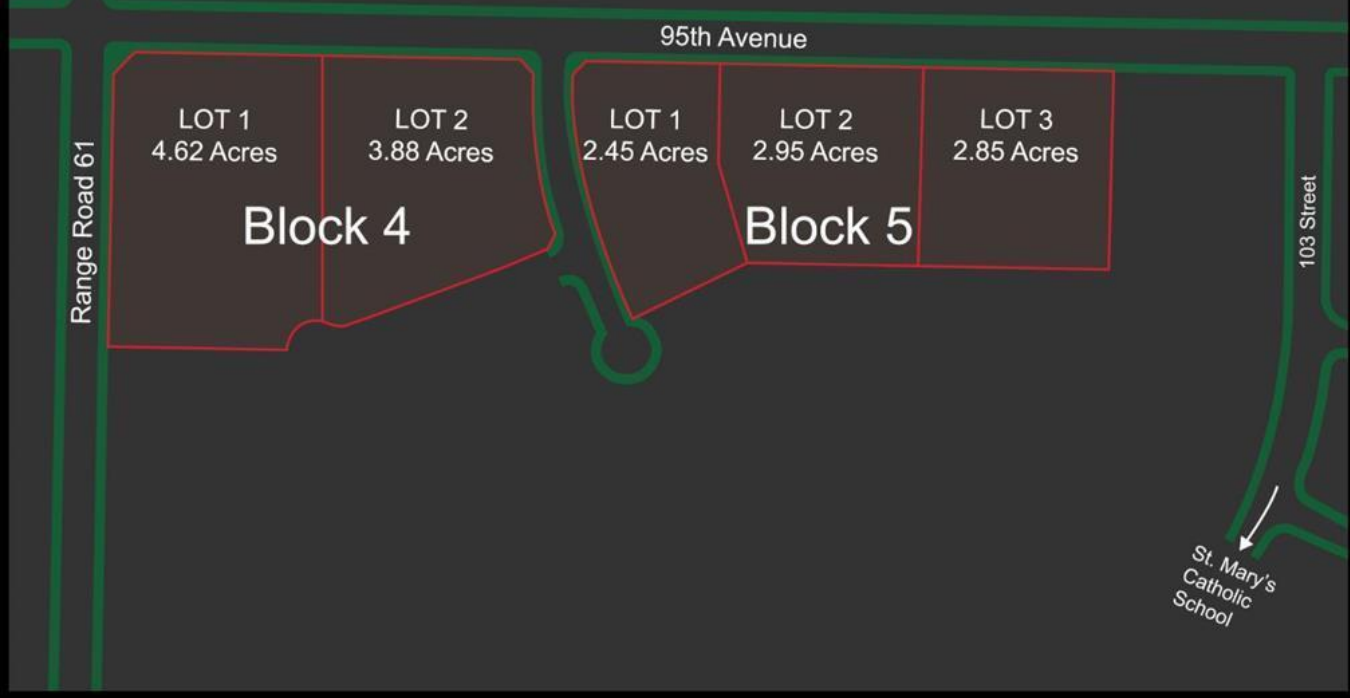




106th Street
REALTOR®



47366 95 Avenue Sexsmith Alberta

\$921,250

COMMERCIAL LOTS! Priced WAY below appraised value! 16.75 acres of commercial land ready for development. This project boasts some pre-existing underground services, laying the foundation for seamless development. Zoning planned to be CL- Commercial Light, but embrace the versatility with the potential for mixed zoning, Positioned strategically along a bustling thoroughfare, commercial lots promise unparalleled visibility, ideal for retail enterprises. With grading and some essential services already in place. Phase one of the subdivision showcases custom-built single-family residences. A cutting-edge K-8 School anchors the heart of this community enclave. Nestled within the vibrant Town of Sexsmith, a mere 12 miles from Grande Prairie, discover a harmonious blend of small-town charm and metropolitan conveniences. Be sure to explore the myriad of federal and municipal development incentives, from CMHC Project financing to Aquatera connection incentives. NOW is the time to take advantage! Contact a Commercial Agent today to assist you in unveiling the possibilities! (id:6769)

Listing Presented By:



Originally Listed by:
RE/MAX Grande Prairie



Royal

Lepage Parkside Realty

PO Box 930; 9925 Main St,
Summerland, BC,

Phone: (250) 462-4888
info@joepeters.ca

The property information on this website is derived from the Canadian Real Estate Association's Data Distribution Facility (DDF®). DDF® references real estate listings held by various brokerage firms and franchisees. The accuracy of information is not guaranteed and should be independently verified. The trademarks REALTOR®, REALTORS® and the REALTOR® logo are controlled by The Canadian Real Estate Association (CREA) and identify real estate professionals who are members of CREA. The trademarks MLS®, Multiple Listing Service® and the associated logos are owned by CREA and identify the quality of services provided by real estate professionals who are members of CREA.