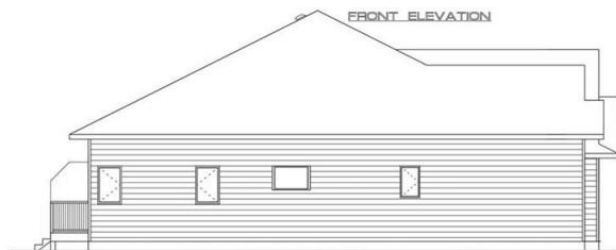




FRONT ELEVATION



LEFT ELEVATION



RIGHT ELEVATION



REAR ELEVATION

EXTERIOR FINISH AS PER SPEC.  
WORK IS TO BE SUBMITTED AND MUST BE  
ACCURATE TO THE ORIGINAL SET DRAWINGS.  
ASSIST CONTRACTOR TO SET WORK.

PERSONALIZED HOME DESIGNS  
1100 BURNING BUSH  
SALMON ARM, B.C.  
V2H 1S0

PERSONALIZED HOME DESIGNS	
PROJECT:	CREEKSIDE UNIT 5 I & D
DATE:	2017-01-10
DESIGNER:	JOE PETERS
CLIENT:	UPTOWN VENTURES
LOCATION:	1100 BURNING BUSH, SALMON ARM, B.C.
STATUS:	CONCEPT
SCALE:	1/8" = 1'-0"
DATE:	2017-01-10
BY:	JOE PETERS
CHECKED BY:	JOE PETERS
DATE:	2017-01-10

# 231 20 Street 5 Salmon Arm British Columbia

\$649,000

If you have been looking for that upscale development, look no further! This 1400 sqft rancher with large double car garage will not disappoint! The development, Creekside Estates, will consist of 19 homes, 8 duplex style and 3 stand alone homes. This home sits at the bottom of the development in a quiet corner at the bottom beside green space and a natural creek. If your looking for privacy, it's a 10 out of 10! The complex is built in a beautiful quiet setting surrounded by loads of green space, a natural creek and pond. This home will have 2 bedrooms and 2 bathrooms. Large open concept living, huge gourmet kitchens with massive island with quartz counters, 9 ft. ceilings, extra large windows, large master bedrooms with 5 piece master bathrooms and walk-in closet. The price includes, fully finished home, fully landscaped, A/C, gas fireplace, quartz counters in the kitchen, and a \$5000 appliance package or credit. Homes take 5-6 months for completion and 10% deposit required. Similar homes are built and ready for viewing or purchase. The developer, Uptown Ventures is well known in Salmon Arm for high standards and quality of work! Don't miss out, call today for all the information. (id:6769)

Living room 13'8" x 15'8"

Kitchen 19'3" x 9'2"

5pc Ensuite bath 9'3" x 8'7"

Bedroom 9'6" x 11'0"

Full bathroom 7'7" x 9'6"

Dining room 9'1" x 11'3"

Primary Bedroom 11' x 13'10"

Listing Presented By:



Originally Listed by:  
Homelife Salmon Arm Realty.Com



Royal

Lepage Parkside Realty

PO Box 930; 9925 Main St,  
Summerland, BC,

Phone: (250) 462-4888  
info@joepeters.ca

The property information on this website is derived from the Canadian Real Estate Association's Data Distribution Facility (DDF®). DDF® references real estate listings held by various brokerage firms and franchisees. The accuracy of information is not guaranteed and should be independently verified. The trademarks REALTOR®, REALTORS® and the REALTOR® logo are controlled by The Canadian Real Estate Association (CREA) and identify real estate professionals who are members of CREA. The trademarks MLS®, Multiple Listing Service® and the associated logos are owned by CREA and identify the quality of services provided by real estate professionals who are members of CREA.