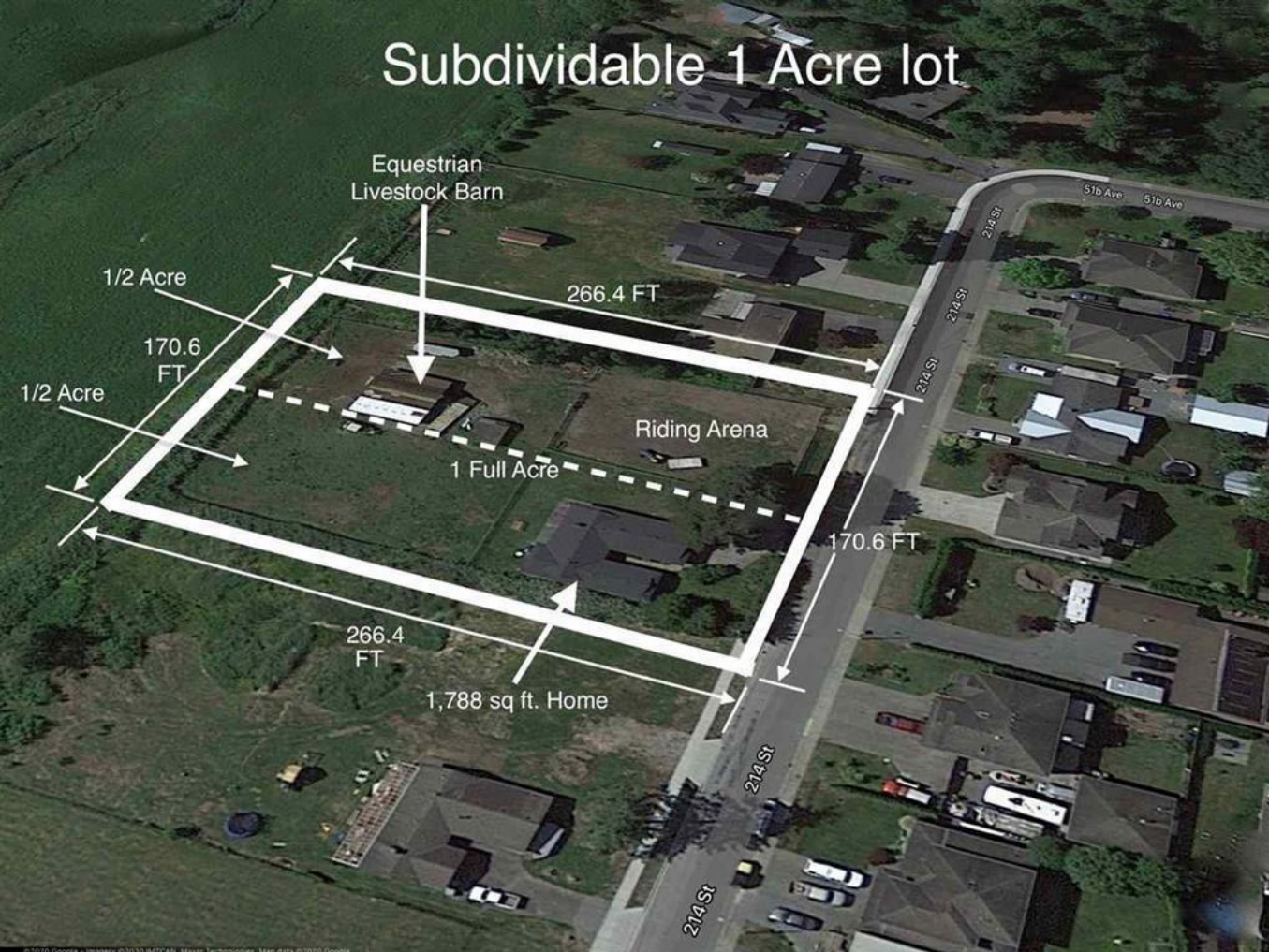


Subdividable 1 Acre lot



5115 214 Langley British Columbia

\$2,950,000

INVESTOR/DEVELOPER ALERT!! SUB-DIVIDABLE 1 ACRE IN MURRAYVILLE. Renovated 3 bdrm, 2 bath rancher with newer roof ready to move in. With a small barn and fenced yard. Lots of potential: Subdivide into two 1/2 acre lots and keep existing rancher on one or tear down and build on both lots OR 1 Home on 1 acre estate. Owner has submitted a proposal to amend the Murrayville Community Plan for the development of 4 single family lots. Proposal is in early stages with no approval buyer to do their own due diligence. Enjoy the unobstructed 50 acre ALR farmland you back onto. Walking distance to schools, shopping, restaurants, golf course and transit in the heart of Langley. Priced for a quick sale motivated seller moving out of country! (id:6769)

Listing Presented By:



Originally Listed by:
Saba Realty Ltd.



Royal

Lepage Parkside Realty

PO Box 930; 9925 Main St,
Summerland, BC,

Phone: (250) 462-4888
info@joepeters.ca

The property information on this website is derived from the Canadian Real Estate Association's Data Distribution Facility (DDF®). DDF® references real estate listings held by various brokerage firms and franchisees. The accuracy of information is not guaranteed and should be independently verified. The trademarks REALTOR®, REALTORS® and the REALTOR® logo are controlled by The Canadian Real Estate Association (CREA) and identify real estate professionals who are members of CREA. The trademarks MLS®, Multiple Listing Service® and the associated logos are owned by CREA and identify the quality of services provided by real estate professionals who are members of CREA.