



5475 SALMON VALLEY Road Prince George British Columbia

\$199,900

Looking for the perfect blend of rural living and value? This 2-acre property offers just that and more! Featuring a 2-bedroom home, a great barn, and additional outbuildings, this is the ideal spot for those seeking space and the opportunity to create your own country haven. Whether you're dreaming of a hobby farm, need extra storage for equipment, or simply want room to breathe, this property has it all. And the best part? It's priced under \$200K - a rare find in today's market! Don't miss out on this affordable opportunity to own a piece of tranquility. All measurements are approximate and buyer to verify if deemed important. (id:6769)

Enclosed porch 5 ft X 10 ft

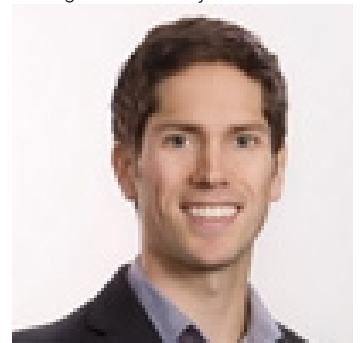
Living room 12 ft X 18 ft

Kitchen 8 ft X 16 ft

Primary Bedroom 12 ft X 16 ft

Bedroom 2 11 ft X 9 ft

Listing Presented By:



Originally Listed by:
Royal LePage Aspire Realty



Royal

Lepage Parkside Realty

PO Box 930; 9925 Main St,
Summerland, BC,

Phone: (250) 462-4888
info@joepeters.ca

The property information on this website is derived from the Canadian Real Estate Association's Data Distribution Facility (DDF®). DDF® references real estate listings held by various brokerage firms and franchisees. The accuracy of information is not guaranteed and should be independently verified. The trademarks REALTOR®, REALTORS® and the REALTOR® logo are controlled by The Canadian Real Estate Association (CREA) and identify real estate professionals who are members of CREA. The trademarks MLS®, Multiple Listing Service® and the associated logos are owned by CREA and identify the quality of services provided by real estate professionals who are members of CREA.