

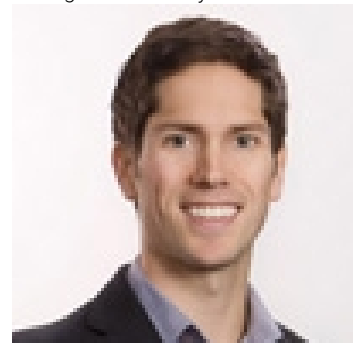


573 Clifton Court Kelowna British Columbia

\$699,900

Panoramic lake views from this PRIME building lot in North Clifton Estates! This coveted 44 lot phase is long sold out and almost completely built-out with stunning high-end homes. This is a rare opportunity to purchase a resale lot and one of the very best lots in the development. Located at the top of the development, with only parkland above and incredible lake and valley views below. This lot lends itself to a walk-out rancher OR a 2 storey plus walkout basement design...only this upper road can accommodate 2 storey (3 level) homes as there are no houses above to obstruct views. This is NOT a select builder development, however builders need to be approved by the developer and design guidelines are in place to ensure homes are built to a high quality standard. (id:6769)

Listing Presented By:



Originally Listed by:
RE/MAX Kelowna

<http://www.neufeldjones.com/>



Royal

Lepage Parkside Realty

PO Box 930; 9925 Main St,
Summerland, BC,

Phone: (250) 462-4888
info@joepeters.ca

The property information on this website is derived from the Canadian Real Estate Association's Data Distribution Facility (DDF®). DDF® references real estate listings held by various brokerage firms and franchisees. The accuracy of information is not guaranteed and should be independently verified. The trademarks REALTOR®, REALTORS® and the REALTOR® logo are controlled by The Canadian Real Estate Association (CREA) and identify real estate professionals who are members of CREA. The trademarks MLS®, Multiple Listing Service® and the associated logos are owned by CREA and identify the quality of services provided by real estate professionals who are members of CREA.