



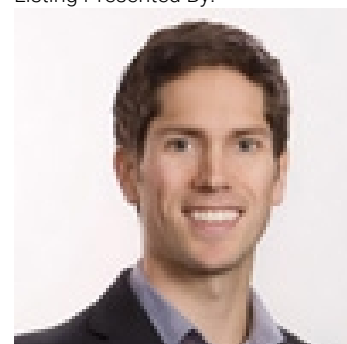
5774 Deadpine Drive Kelowna British Columbia

\$3,995,000

6000+ sq.ft., newly renovated 6 bedroom, 6 bathroom residence situated on 9.364 acres of land in the Ellison area of Kelowna with a huge pool, lake views, and more. The home has been renovated from top to bottom and down to the studs, including brand-new electrical, plumbing, drywall, insulation, exterior (including roof), all cosmetic finishings, and more, making this a showstopping renovation by Caliber Developments. Through the gated entry, you are immediately drawn to the wood and stone exterior of the home, with a huge oversized triple car garage and additional side garage, perfect for a dedicated workshop. The living room with over height ceilings/windows is complimented by a wood-burning stove and a cooled wine room. Down a half-level is the new kitchen, complimented by brand-new appliances, an emphatic double island, and a family room, all opening up to the outdoor living space for a perfect indoor/outdoor transition. Off the kitchen is a powder room, and bedroom/office. Upstairs, the family-friendly layout offers 3 bedrooms, including a spacious master bedroom with his/her sinks, a freestanding tub, and tiled shower. There is a 35'x34' recreational room, partially finished and awaiting your ideas: studio/office, gym, kids room, etc, with rough-ins for a bathroom & bar. There is a fully self-contained legal suite in the basement, great for guests! Outside, the infinity pool offers expansive views of the lake and valley ahead, and concrete areas for entertaining. (id:6769)

- Other 9'6" x 11'4"
- 5pc Ensuite bath 13' x 14'8"
- Primary Bedroom 17'4" x 14'8"
- Full bathroom 5'7" x 8'
- Bedroom 10'8" x 13'8"
- Bedroom 9'6" x 17'3"
- 3pc Bathroom 7'10" x 7'7"
- Recreation room 35'2" x 34'1"
- Bedroom 20'3" x 11'8"
- 2pc Bathroom 6'6" x 5'5"
- 3pc Ensuite bath 11'8" x 5'
- Bedroom 15'1" x 11'3"
- Dining room 15'9" x 11'2"
- Kitchen 31'4" x 30'5"
- Living room 24'5" x 30'8"
- Full bathroom

Listing Presented By:



Originally Listed by:
Sotheby's International Realty
Canada

<http://www.scottmarshallhomes.com/>



Royal

Lepage Parkside Realty

PO Box 930; 9925 Main St,
Summerland, BC,

Phone: (250) 462-4888
info@joepeters.ca

The property information on this website is derived from the Canadian Real Estate Association's Data Distribution Facility (DDF®). DDF® references real estate listings held by various brokerage firms and franchisees. The accuracy of information is not guaranteed and should be independently verified. The trademarks REALTOR®, REALTORS® and the REALTOR® logo are controlled by The Canadian Real Estate Association (CREA) and identify real estate professionals who are members of CREA. The trademarks Multiple Listing Service® and the associated logos are owned by CREA and identify the quality of services provided by real estate professionals who are members of CREA.

Storage 11'1" x 4'8"

Bedroom 16'5" x 13'3"

Laundry room 24'6" x 16'9"