

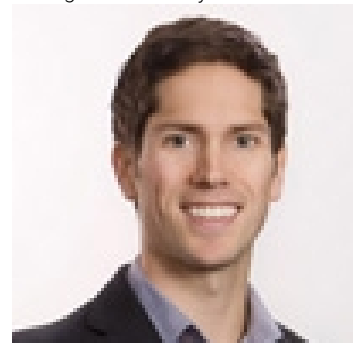


5825 JINKERSON Road Chilliwack British Columbia

\$1,098,888

Experience the epitome of charm on this half-acre gem on Promontory near Jinkerson Park! Fully renovated 3-bed, 2-bath 60s bungalow featuring exquisite solid wood kitchen cabinets with soft-close doors. Cozy up in the spacious living room by the wood-burning fireplace. The master suite boasts its own fireplace and walk-in closet. Bask in park-like serenity while sipping morning coffee on the kitchen patio with stunning mountain views. Retreat to the private backyard oasis, surrounded by nature's symphony. Plenty of space for toys and potential for a large shop with a carriage home. Enjoy rural seclusion just minutes from all amenities. Uncover redevelopment opportunities with City Planning. This is your chance to own a slice of paradise! (id:6769)

Listing Presented By:



Originally Listed by:
Sutton Group-West Coast Realty
(Abbotsford)



Royal

Lepage Parkside Realty

PO Box 930; 9925 Main St,
Summerland, BC,

Phone: (250) 462-4888
info@joepeters.ca

The property information on this website is derived from the Canadian Real Estate Association's Data Distribution Facility (DDF®). DDF® references real estate listings held by various brokerage firms and franchisees. The accuracy of information is not guaranteed and should be independently verified. The trademarks REALTOR®, REALTORS® and the REALTOR® logo are controlled by The Canadian Real Estate Association (CREA) and identify real estate professionals who are members of CREA. The trademarks MLS®, Multiple Listing Service® and the associated logos are owned by CREA and identify the quality of services provided by real estate professionals who are members of CREA.