

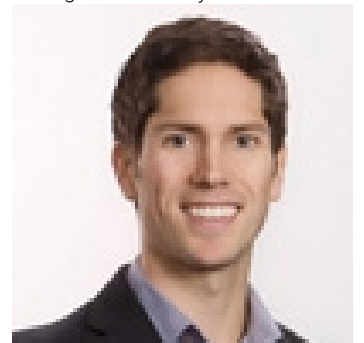


5826 SHAWNIGAN Drive Chilliwack British Columbia

\$1,349,000

Discover the epitome of comfortable living at 5826 Shawnigan Drive in the heart of Garrison Crossing, Chilliwack's premier neighbourhood. This impeccable maintained 4-bed, 4-bath home spans over 3000 sq ft, offering a perfect blend of elegance and practicality. Minutes from shopping, restaurants, Cheam Leisure Centre, and outdoor havens like Vedder River and Cultus Lake. The property features a well-designed rental income suite, adding both value and flexibility. With its prime location and meticulous landscaping, this residence embodies the charm of Garrison Crossing living. Seize the opportunity to experience the best in Chilliwack - a home that effortlessly combines style convenience, and natural beauty. (id:6769)

Listing Presented By:



Originally Listed by:
Angell, Hasman & Associates Realty Ltd.



Royal

Lepage Parkside Realty

PO Box 930; 9925 Main St,
Summerland, BC,

Phone: (250) 462-4888
info@joepeters.ca

The property information on this website is derived from the Canadian Real Estate Association's Data Distribution Facility (DDF®). DDF® references real estate listings held by various brokerage firms and franchisees. The accuracy of information is not guaranteed and should be independently verified. The trademarks REALTOR®, REALTORS® and the REALTOR® logo are controlled by The Canadian Real Estate Association (CREA) and identify real estate professionals who are members of CREA. The trademarks MLS®, Multiple Listing Service® and the associated logos are owned by CREA and identify the quality of services provided by real estate professionals who are members of CREA.