



# White City Saskatchewan

\$589,900

Welcome to 59 Emerald Ridge E. This beautiful custom built bi-level is located in White City close to walking paths and within walking distance to Emerald Ridge Elementary School. The spacious front entry features a 4' wide stairway leading to the main level with hardwood floors and vaulted ceilings. The kitchen features dark maple cabinets, stainless steel appliances, tile backsplash and eat-up peninsula. The dining room is well appointed with a piano window for additional light and access to the Suncoast Enclosures screened in deck. The adjacent living room boasts floor to ceiling windows with a great view over looking the backyard. The vaulted ceilings continue into the 2 main floor bedrooms and 4PC family bath. The primary bedroom is located on the upper level with a large walk-in closet and a 4 piece ensuite with double sinks and tiled shower. Down stairs you'll find the fully developed basement offering a spacious family room with large windows, making it a great space for entertaining, relaxing, and playing. There is even roughed-in plumbing for the option of a future wet bar. Additionally, there is a large 4th bedroom and a 4 piece bathroom. The laundry room comes complete with a sink and upper cabinets for additional storage. There is also more room for storage in the utility room. The double attached garage has dual overhead doors and is insulated and boarded. The garage also has convenient hot and cold water taps! The front and rear yards are wonderfully landscaped with underground sprinklers on a timer. The gorgeous backyard is fully fenced with a deck/patio, shed, lots of mature trees and a newly developed fire pit area with flagstone pavers and low maintenance grass/clover mix, surrounded by hydrangeas, creating an outdoor oasis all summer long. New HE furnace in 2023. This home is sure to please... Schedule your showing today! (id:6769)

Primary Bedroom 15 ft,6 in X 12 ft,4 in

4pc Ensuite bath 13 ft,6 in X 10 ft,4 in

Family room 21 ft,3 in X 16 ft,10 in

Bedroom 16 ft,4 in X 12 ft,1 in

Utility room 9 ft,6 in X 5 ft

4pc Bathroom 9 ft,6 in X 5 ft

Living room 13 ft,6 in X 17 ft

Dining room 10 ft X 8 ft

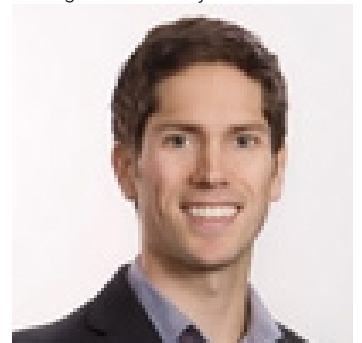
Kitchen 13 ft,10 in X 12 ft,6 in

Bedroom 10 ft,6 in X 9 ft,10 in

4pc Bathroom 9 ft,6 in X 5 ft

Bedroom 12 ft,10 in X 8 ft,8 in

Listing Presented By:



Originally Listed by:  
Century 21 Dome Realty Inc.

<http://www.ryanculbert.ca/>



Royal

Lepage Parkside Realty

PO Box 930; 9925 Main St,  
Summerland, BC,

Phone: (250) 462-4888  
info@joepeters.ca