



# 5947 Newport Drive Nanaimo British Columbia

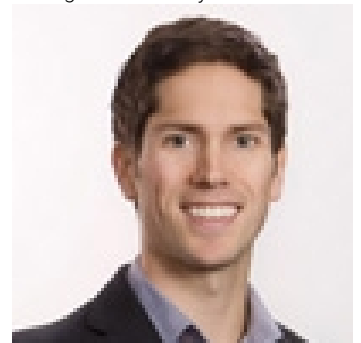
\$799,900

It's all about location and this custom built 3 bed 3 bath home is well situated on a quiet, family friendly street in the desirable North Nanaimo area! The functional split level layout features a semi-open floor plan with a bright living room, kitchen with peninsula, breakfast nook and dining room and tons of light provided by skylights. Upstairs you will find the Primary bedroom with a 4 piece ensuite and walk-in closet, 2 additional bedrooms, a 4 piece main bathroom and large storage closet. On the lower level enjoy a spacious family room, laundry and 2 pc bath off the garage entrance. Other features include quality flooring throughout, a propane fireplace, lots of storage, double garage with power door opener, sheds, large driveway with plenty of space for an RV, & a fully fenced low maintenance backyard with a concrete patio that offers the perfect private oasis to entertain. Walking distance to elementary schools & Dover Bay Secondary School, public transportation, & 5 minutes away from Woodgrove Mall, VIRL public library, beaches, multiple parks, playgrounds and trails. (id:6769)

Ensuite 4-Piece  
 Storage 6'11 x 4'1  
 Bedroom 9'4 x 8'8  
 Bedroom 9'4 x 8'7  
 Bathroom 4-Piece  
 Primary Bedroom 15'3 x 12'2  
 Entrance 5 ft x Measurements not available

Family room 13'8 x 12'10  
 Laundry room 11'10 x 5'8  
 Bathroom 2-Piece  
 Living room 11'7 x 11'6  
 Dining room 14'3 x 12'5  
 Kitchen 12'3 x 10'7  
 Dining nook 8'5 x 7'5

Listing Presented By:



Originally Listed by:  
 Royal LePage Nanaimo Realty  
 (NanIsHwyN)



Royal

**Lepage Parkside Realty**

PO Box 930; 9925 Main St,  
 Summerland, BC,

Phone: (250) 462-4888  
 info@joepeters.ca