



1400 Lynburne Place 601 Langford British Columbia

\$975,000

Discover the perfect downsizing opportunity within the vibrant Bear Mountain community at Finlayson Reach. Situated in the sole steel and concrete building on Bear Mountain, this exceptional corner suite offers an ideal transition for those moving from a single-family home, seeking multiple bedrooms, bathrooms, and ample space. Boasting a tranquil location on the quiet side of the building, this 1600 sqft residence presents breathtaking views of the golf course, Mt Finlayson, and Mt Baker. The well-appointed interior includes a master bedroom with a luxurious 5-piece ensuite, a second bedroom with a convenient 4-piece ensuite, and a spacious flex room suitable for a dining area, recreational space, home office, or even a third bedroom. Additionally, the home features a powder room for added convenience. Enjoy the outdoors on three separate covered decks, perfect for observing golfers and embracing the serene surroundings. The building offers a wealth of amenities, including a social room for hosting gatherings, a fitness center, and a theater. Immerse yourself in the Bear Mountain lifestyle with proximity to two Nicklaus Championship golf courses, practice facilities, world-class tennis, mountain biking trails, a spa, as well as various restaurants and lounges. The package is complete with two secure underground parking spots and a separate storage locker, ensuring convenience and security for your new home. (id:6769)

Ensuite 4-Piece

Ensuite 5-Piece

Laundry room 5' x 6'

Bedroom 15' x 10'

Bedroom Measurements not available x 12 ft

Bathroom 2-Piece

Primary Bedroom 15' x 14'

Kitchen Measurements not available x 13 ft

Patio 13' x 12'

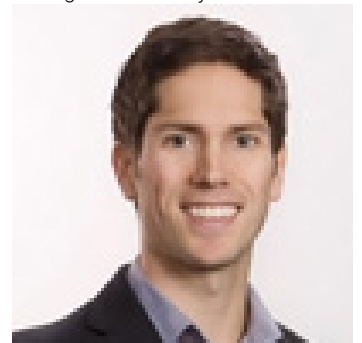
Living room 20' x 16'

Patio 13' x 12'

Patio Measurements not available x 9 ft

Entrance Measurements not available x 5 ft

Listing Presented By:



Originally Listed by:
RE/MAX Generation

<http://www.cherylarnes.ca/>



Royal

Lepage Parkside Realty

PO Box 930; 9925 Main St,
Summerland, BC,

Phone: (250) 462-4888
info@joepeters.ca