



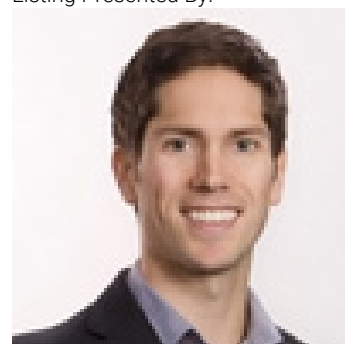
# 633 Middleton Way Coldstream British Columbia

\$1,150,000

Seller financing (below bank rates) can help you immediately move into this 4 Bedrm executive residence on Middleton Mtn in Coldstream BC, where you can work from home in a beautiful setting that is easy for your clients to find. Turquoise Kalamalka Lake is nestled in a valley surrounded by mountains, orchards, & vineyards that make it the prettiest lake in the Okanagan. Your home office has a picture window looking at Kal Lake & take breaks on your upper level full length covered balcony. Up the curved staircase you have spacious living areas, with 2 gas fireplaces, dining rm, open kitchen with eating area, 2 bedrms, including a large primary suite, 5 piece ensuite complete with jetted tub & an amazing walk-in closet with cherry wood drawers & doors. The ground level provides 2 more bedrms, office & family rm, laundry, full bathrm & newly improved central air conditioning. This backyard provides a peaceful retreat among grapevines & colourful gardens that bloom differently spring through fall adjacent a Tiki bar perfect for BBQs & relaxation in a fully fenced puppy friendly backyard. A bright 2 car garage & plenty of outside parking. Traveling is easy, only 30 minutes to YLW International Airport. This home is an easy walk up to Middleton Mtn Trail. Just 2 minutes down to:Kal Lake Provincial Park, the Okanagan Rail Trail for biking, walking in local parks, beaches, paddle boarding on Kal Lake, exploring the Okanagan fishing or just enjoy a boat trip to Wood Lk through Oyama. (id:6769)

- 4pc Bathroom 6'4" x 11'0"
- Bedroom 13'4" x 10'11"
- 5pc Ensuite bath 11'3" x 12'8"
- Other 12'5" x 9'7"
- Primary Bedroom 22'8" x 15'6"
- Dining nook 10'4" x 8'5"
- Family room 14'7" x 13'5"
- Kitchen 10'11" x 11'0"
- Dining room 14' x 11'4"
- Living room 12'3" x 18'11"
- Bedroom 14'2" x 13'9"
- Laundry room 7'10" x 10'2"
- 4pc Bathroom 5'10" x 10'2"
- Bedroom 17'8" x 13'9"
- Recreation room 20'7" x 19'0"
- Foyer 14'11" x 10'2"

Listing Presented By:



Originally Listed by:  
Royal LePage Downtown Realty

<http://www.danreinhardt.ca/>



Royal

**Lepage Parkside Realty**

PO Box 930; 9925 Main St,  
Summerland, BC,

Phone: (250) 462-4888  
info@joepeters.ca

The property information on this website is derived from the Canadian Real Estate Association's Data Distribution Facility (DDF®). DDF® references real estate listings held by various brokerage firms and franchisees. The accuracy of information is not guaranteed and should be independently verified. The trademarks REALTOR®, REALTORS® and the REALTOR® logo are controlled by The Canadian Real Estate Association (CREA) and identify real estate professionals who are members of CREA. The trademarks MLS®, Multiple Listing Service® and the associated logos are owned by CREA and identify the quality of services provided by real estate professionals who are members of CREA.