



Regina Saskatchewan

\$299,900

Looking for a great family home in a highly desirable location? You just found it! Tucked away on a quiet drive, 66 Patterson is a functional 1,113 sqft. bungalow situated on a large 6,476 sqft lot, located close to U of R and facing green space. Close proximity to Wascana Park, both elementary & high schools, amenities, parks, Conexus Arts Centre, ice rink, bus routes and main arteries. Upon entry, appreciate the gleaming hardwood flooring and natural light! The main floor boasts a spacious living and dining room, kitchen, 3 bedrooms and 1 full bathroom. Freshly painted and ready for new owners, this property is turn key! Other noteworthy items include newer PVC windows throughout main floor, newer water line ran to the property, sewer line replaced from front cleanout to city connection, city sewer lines replaced this year, 200amp underground electrical service ran, updated electrical panel, stainless steel appliances, shingles and more! Contact your agent today to book your private showing. (id:6769)

Other - x -

Living room 15 ft X 12 ft ,2 in

Dining room 10 ft ,4 in X 9 ft ,1 in

Kitchen 11 ft ,6 in X 9 ft ,10 in

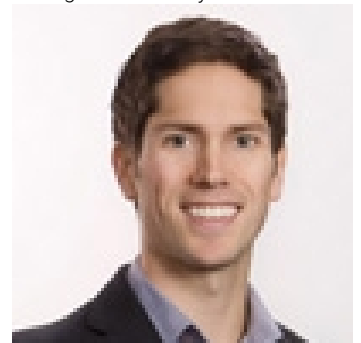
Bedroom 9 ft ,10 in X 12 ft ,2 in

Bedroom 8 ft ,1 in X 9 ft ,8 in

Bedroom 11 ft ,10 in X 11 ft ,8 in

4pc Bathroom - x -

Listing Presented By:



Originally Listed by:
Realty Executives Diversified Realty

<https://victoriachupa.ca>



Royal

Lepage Parkside Realty

PO Box 930; 9925 Main St,
Summerland, BC,

Phone: (250) 462-4888
info@joepeters.ca