



661 Mt. York Drive Coldstream British Columbia

\$1,289,000

The perfect high-end executive family home on Middleton Mountain in Coldstream. A true two-story home with four bedrooms on the upper floor, ideal for young families. You will love the fully updated and modern interior done in 2020. Great open floor plan on the main offers a generous living room centered around a gas fireplace with ceilings that soar to the second level. The quiet front office space is perfect for remote work and adding a murphy bed would also create a great guest room! Family sized kitchen with large island, granite counters and plenty of cabinet space to satisfy any chef! A grand staircase leads to the open-air walkway on the second level with breathtaking views of Kalamalka Lake. This quiet sleeping level offers four bedrooms and two full bathrooms. The large primary has extra-large closet space and a stunning ensuite. The lower level is ready for fun with a full media room with surround sound for movie night and a large games room for entertaining both young and old! A fifth bedroom and full bath are ready for guests! The private backyard, which once had a pool, could easily be redone. Wiring is in place for a hot tub as well. The large pergola with wood burning fire table is perfect for fall evenings on the patio. Add in the hot water on demand, attached two-car garage with EV charger, solar panels to drive down your hydro costs, and this home is the ready for your family. (id:6769)

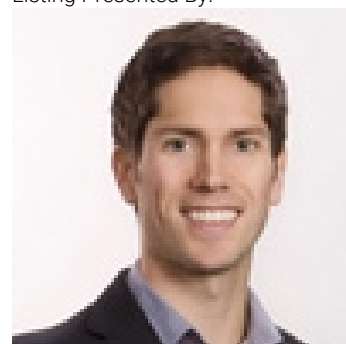
- 4pc Bathroom 5'6" x 8'8"
- Bedroom 10'0" x 12'5"
- Bedroom 13'5" x 9'10"
- Bedroom 13'5" x 10'0"
- 5pc Ensuite bath 12'6" x 10'10"
- Other 6'1" x 8'6"

- Recreation room 14'11" x 27'1"
- Bedroom 13'8" x 14'5"
- Other 25'0" x 23'2"
- Laundry room 10'5" x 9'7"
- Kitchen 17'7" x 13'6"
- Dining room 13'5" x 10'6"

- Primary Bedroom 15'4" x 17'4"
- Utility room 14'5" x 23'3"
- 4pc Bathroom 9'0" x 11'0"

- Living room 10'5" x 9'7"
- 2pc Bathroom 5'0" x 6'5"
- Dining room 13'5" x 10'6"

Listing Presented By:



Originally Listed by:
RE/MAX Priscilla

<http://www.okanaganhomes.com/>



Royal

Lepage Parkside Realty

PO Box 930; 9925 Main St,
Summerland, BC,

Phone: (250) 462-4888
info@joepeters.ca

The property information on this website is derived from the Canadian Real Estate Association's Data Distribution Facility (DDF®). DDF® references real estate listings held by various brokerage firms and franchisees. The accuracy of information is not guaranteed and should be independently verified. The trademarks REALTOR®, REALTORS® and the REALTOR® logo are controlled by The Canadian Real Estate Association (CREA) and identify real estate professionals who are members of CREA. The trademarks Multiple Listing Service® and the associated logos are owned by CREA and identify the quality of services provided by real estate professionals who are members of CREA.

