



6800 100 Avenue Peace River Alberta

\$499,000

Acreage living right in Town! All the conveniences of town are only a couple minutes away. Located on the west hill across the highway from the Hospital you will find this very unique property. There is plenty of room to roam here with beautiful lawn areas, wonderful private treed firepit area and a large fenced in garden spot to grow lots of vegetables. The outside also has lots of covered porches to relax and enjoy the scenery, a large 26x28 heated garage and abundant saskatoon, raspberry and other berry bushes on the property to enjoy. Inside the large home you will find a good sized kitchen with large dining area for lots of guests and the living room just past that with newer windows throughout that let in lots of natural light. Top that off with 3 bedrooms and 2 full baths, hardwood floors and main floor laundry and you have a complete package. Don't wait, call for your appointment to view. (id:6769)

Primary Bedroom 12.92 Ft x 10.92 Ft

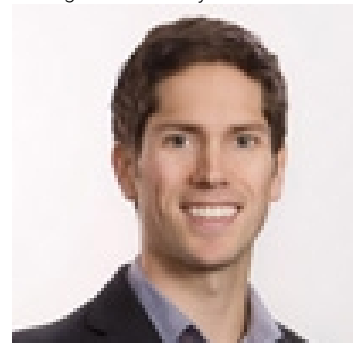
Bedroom 12.00 Ft x 10.92 Ft

Bedroom 11.42 Ft x 8.50 Ft

4pc Bathroom .00 Ft x .00 Ft

4pc Bathroom .00 Ft x .00 Ft

Listing Presented By:



Originally Listed by:
Royal LePage Valley Realty

<https://royallepagevalleyrealty.ca/our-team/>



Royal

Lepage Parkside Realty

PO Box 930; 9925 Main St,
Summerland, BC,

Phone: (250) 462-4888
info@joepeters.ca

The property information on this website is derived from the Canadian Real Estate Association's Data Distribution Facility (DDF®). DDF® references real estate listings held by various brokerage firms and franchisees. The accuracy of information is not guaranteed and should be independently verified. The trademarks REALTOR®, REALTORS® and the REALTOR® logo are controlled by The Canadian Real Estate Association (CREA) and identify real estate professionals who are members of CREA. The trademarks MLS®, Multiple Listing Service® and the associated logos are owned by CREA and identify the quality of services provided by real estate professionals who are members of CREA.