



BAY STREET GROUP INC., Brokerage

75 Norman Bethune Avenue 714 Richmond Hill Beaver Creek Business Park Ontario

\$568,000

* 609 sf* south facing * Giant Sun Filled Unit * This Amazing unit Features Layout W/ No Wasted Space. Spacious, Open Concept with huge Windows, Gourmet Chef's Eat-In Kitchen with Granite Counters. Enjoy The Luxury Of Amazing Hotel-Like Amenities Which Include 24-Hour Concierge, Indoor Pool, Hot Tub, Gym, Sauna, Party Room, And Visitor Parking and Etc. **** EXTRAS **** Existing Fridge, Stove, Washer, Dryer, Light Fixtures, Windows Covering (id:6769)

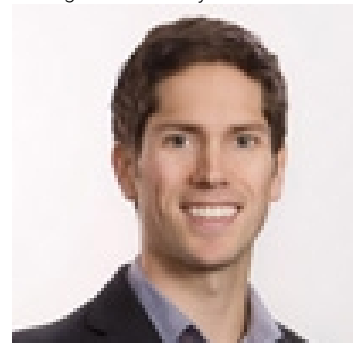
Living room 4.19 m X 3.03 m

Kitchen 3.36 m X 2.2 m

Primary Bedroom 4.11 m X 3.18 m

Den 3.36 m X 1.86 m

Listing Presented By:



Originally Listed by:
BAY STREET GROUP INC.



Royal

Lepage Parkside Realty

PO Box 930; 9925 Main St,
Summerland, BC,

Phone: (250) 462-4888
info@joepeters.ca

The property information on this website is derived from the Canadian Real Estate Association's Data Distribution Facility (DDF®). DDF® references real estate listings held by various brokerage firms and franchisees. The accuracy of information is not guaranteed and should be independently verified. The trademarks REALTOR®, REALTORS® and the REALTOR® logo are controlled by The Canadian Real Estate Association (CREA) and identify real estate professionals who are members of CREA. The trademarks MLS®, Multiple Listing Service® and the associated logos are owned by CREA and identify the quality of services provided by real estate professionals who are members of CREA.