



724 FRANCOIS LAKE Road Fraser Lake British Columbia

\$485,000

*PREC - Personal Real Estate Corporation. Nestled on 13.27 acres of pure tranquility, this 4-bed, 1-bath property is your gateway to a self-sufficient lifestyle. The home features a charming, covered porch, a 4-bay pole shed (52' x 32'), a detached workshop, meat cooler, and a fully equipped meat cutting shop making this property a dream for hobbyists or those seeking a self-sufficient lifestyle. The fenced area is ideal for horses or other animals, while the large garden and root cellar offers space to cultivate your own produce. Backed by crown land and with two driveway accesses, this property ensures privacy and endless opportunities for exploration. Just minutes from the Stellako River and Francois Lake, outdoor adventures await right at your doorstep. This property isn't just a home; it's a lifestyle. (id:6769)

Utility room 4 ft,1 in X 23 ft,6 in

Bedroom 3 13 ft,3 in X 11 ft,2 in

Bedroom 4 9 ft,2 in X 11 ft,4 in

Storage 8 ft,4 in X 6 ft,7 in

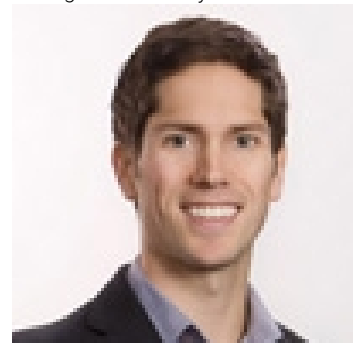
Kitchen 15 ft,4 in X 8 ft,1 in

Living room 13 ft,6 in X 16 ft,5 in

Primary Bedroom 10 ft,1 in X 13 ft,5 in

Bedroom 2 9 ft,2 in X 11 ft,1 in

Listing Presented By:



Originally Listed by:
RE/MAX Vanderhoof



Royal

Lepage Parkside Realty

PO Box 930; 9925 Main St,
Summerland, BC,

Phone: (250) 462-4888
info@joepeters.ca

The property information on this website is derived from the Canadian Real Estate Association's Data Distribution Facility (DDF®). DDF® references real estate listings held by various brokerage firms and franchisees. The accuracy of information is not guaranteed and should be independently verified. The trademarks REALTOR®, REALTORS® and the REALTOR® logo are controlled by The Canadian Real Estate Association (CREA) and identify real estate professionals who are members of CREA. The trademarks MLS®, Multiple Listing Service® and the associated logos are owned by CREA and identify the quality of services provided by real estate professionals who are members of CREA.