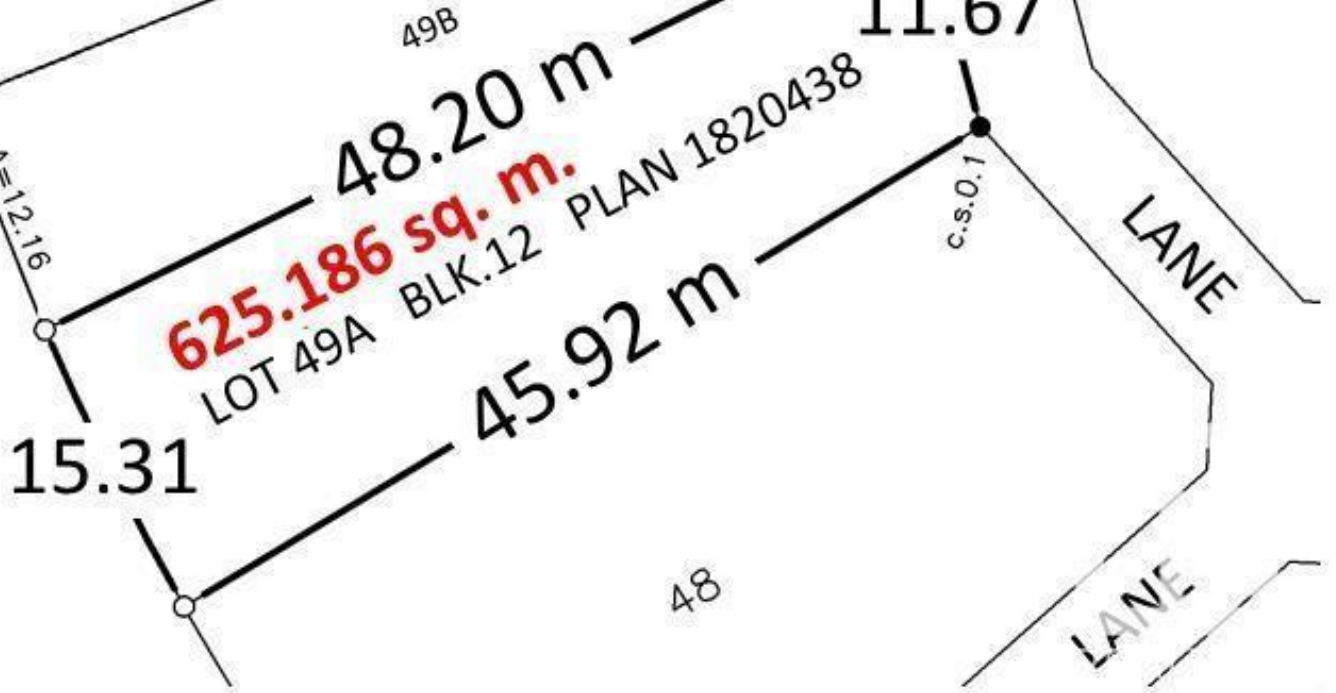




8307 SASKATCHEWAN DRIVE
50.2 FEET FRONTAGE
158 FEET LONGEST SIDE
38.2 FEET AT LANEWAY
6726 sq.ft.



Edmonton Alberta

\$777,000

Please price-compare: 625 sq.m., 6726 sq.ft., 50-foot front, 38-foot lane way access. Build a 38 ft. wide 3-storey home and a triple garage. Best Southwest sunset view on Saskatchewan Drive. Because you are directly across from Irene's Lookout you see the whole River Valley from your new second and third floors. Serviced lot is cleared and flat - no demolition required. Motivated seller. (id:6769)

Listing Presented By:



Originally Listed by:
RE/MAX Elite



Royal

Lepage Parkside Realty

PO Box 930; 9925 Main St,
Summerland, BC,

Phone: (250) 462-4888
info@joepeters.ca

The property information on this website is derived from the Canadian Real Estate Association's Data Distribution Facility (DDF®). DDF® references real estate listings held by various brokerage firms and franchisees. The accuracy of information is not guaranteed and should be independently verified. The trademarks REALTOR®, REALTORS® and the REALTOR® logo are controlled by The Canadian Real Estate Association (CREA) and identify real estate professionals who are members of CREA. The trademarks MLS®, Multiple Listing Service® and the associated logos are owned by CREA and identify the quality of services provided by real estate professionals who are members of CREA.