

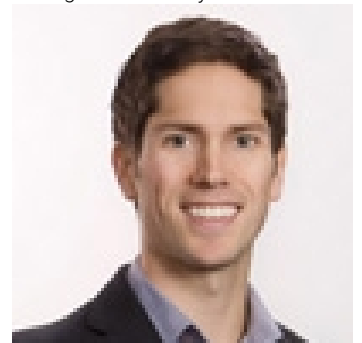


# 8735 CORNWALL Crescent Chilliwack British Columbia

\$948,900

Stunning home in a great quiet- neighborhood in Chilliwack, 3 bdrm 2 full bthrm split entry home on a large 6098 sf corner lot. Single car garage and a beautiful- detached 30.5'X15t heated shop w/14X9 overhead door, RV parking. Lots of updates here! Newer kitchen, s/s appliances/ windows, vinyl plank flooring, paint, vinyl fences. heat pump/a/c, newer roof, hot water tank, winter water bibs, newer deck w/updated foundation & deck railings w/a hot tub built in! This home is perfect for any size family. You will not be disappointed! Flexible dates. (id:6769)

Listing Presented By:



Originally Listed by:  
One Percent Realty Ltd.

<http://www.karenralph.ca/>



Royal

**Lepage Parkside Realty**

PO Box 930; 9925 Main St,  
Summerland, BC,

Phone: (250) 462-4888  
[info@joepeters.ca](mailto:info@joepeters.ca)

The property information on this website is derived from the Canadian Real Estate Association's Data Distribution Facility (DDF®). DDF® references real estate listings held by various brokerage firms and franchisees. The accuracy of information is not guaranteed and should be independently verified. The trademarks REALTOR®, REALTORS® and the REALTOR® logo are controlled by The Canadian Real Estate Association (CREA) and identify real estate professionals who are members of CREA. The trademarks MLS®, Multiple Listing Service® and the associated logos are owned by CREA and identify the quality of services provided by real estate professionals who are members of CREA.