



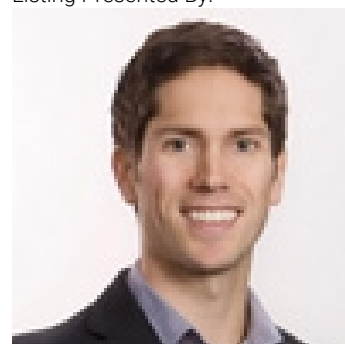
8767 Cortland Place Coldstream British Columbia

\$1,299,000

This family home, nestled in a picturesque cul-de-sac overlooking stunning Kalamalka Lake, offers a blend of classic charm & modern amenities, making it the perfect retreat. With incredible views & easy maintenance, this bright & spacious haven is designed to provide comfort & convenience. Enjoy unobstructed views of Kalamalka Lake from various vantage points throughout the home. An elegant & classic interior with a bright & open layout floods the home with natural light, creating a warm & inviting atmosphere. Tray ceilings add sophistication & charm to the living & dining areas, enhancing the home's appeal. Both the exterior & interior have been painted in a neutral palette, ensuring a fresh & timeless look that complements any décor style. The back patio is equipped with a built-in gas BBQ, perfect for entertaining and just off set from the beautiful pond. The primary bedroom boasts a generous walk-in closet, providing ample storage + a full ensuite bath designed with relaxation in mind, featuring a deep soaking tub, a separate glass-enclosed shower, & dual sinks. Conveniently located RV parking with a dedicated electrical hook-up. The easy-to-maintain, landscaped gardens offer a serene & beautiful outdoor space for relaxation & play. Located close to walking trails & parks, this home is a perfect blend of classic beauty, modern amenities, & practical features, making it an ideal sanctuary for a growing family looking for a comfortable & stylish living space. (id:6769)

- Foyer 12'9" x 9'1"
- Laundry room 9'0" x 6'4"
- Bedroom 12'6" x 13'1"
- Den 6'0" x 7'7"
- 4pc Bathroom 11'4" x 6'0"
- Media 18'16" x 15'8"
- Bedroom 11'6" x 12'2"
- 5pc Ensuite bath 11'8" x 10'11"
- Primary Bedroom 12'9" x 15'1"
- Bedroom 11'0" x 11'1"
- Bedroom 10'10" x 12'0"
- 4pc Bathroom 11'11" x 5'0"
- Kitchen 13'0" x 15'9"
- Dining room 13'0" x 10'7"
- Living room 15'1" x 19'4"

Listing Presented By:



Originally Listed by:
RE/MAX Vernon

<http://www.jaymemckillop.com/>



Royal

Lepage Parkside Realty

PO Box 930; 9925 Main St,
Summerland, BC,

Phone: (250) 462-4888
info@joepeters.ca

The property information on this website is derived from the Canadian Real Estate Association's Data Distribution Facility (DDF®). DDF® references real estate listings held by various brokerage firms and franchisees. The accuracy of information is not guaranteed and should be independently verified. The trademarks REALTOR®, REALTORS® and the REALTOR® logo are controlled by The Canadian Real Estate Association (CREA) and identify real estate professionals who are members of CREA. The trademarks MLS®, Multiple Listing Service® and the associated logos are owned by CREA and identify the quality of services provided by real estate professionals who are members of CREA.