



80 Kettleview Road 9 Big White British Columbia

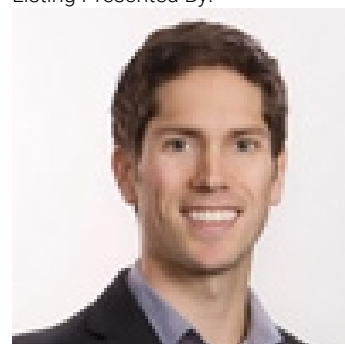
\$819,000

Village located chalet-style duplex! This incredible two bedroom plus den, three bathroom property includes a highly coveted private garage and over 1600 sq. ft. of functional mountain living space. Enjoy the lovely mountain views, heated slate floors, in-suite laundry, ski-in/ski-out access to the Perfection Run and quality finishes throughout the entire unit. This fully furnished property is ready for you and your family to enjoy. Steps from all of the Village amenities, this Big White property offers location, quality, and comes completely turn-key. LIVE WHERE YOU PLAY! Exempt from Foreign Buyer Ban, Foreign buyers tax, speculation tax, empty home tax, and short term rental ban. (id:6769)

3pc Ensuite bath 8'2" x 7'4"
 4pc Bathroom 8'2" x 6'0"
 Bedroom 10'1" x 9'10"
 Primary Bedroom 13'2" x 10'3"
 Other 19'0" x 11'0"
 3pc Bathroom 7'0" x 5'0"

Kitchen 13'0" x 10'6"
 Den 8'6" x 6'6"
 Dining room 14'6" x 11'0"
 Living room 15'0" x 13'0"
 Mud room 7'0" x 6'0"
 Foyer 7'0" x 5'2"

Listing Presented By:



Originally Listed by:
 Sotheby's International Realty
 Canada

<http://www.joanwolf.ca/>



Royal

Lepage Parkside Realty

PO Box 930; 9925 Main St,
 Summerland, BC,

Phone: (250) 462-4888
info@joepeters.ca

The property information on this website is derived from the Canadian Real Estate Association's Data Distribution Facility (DDF®). DDF® references real estate listings held by various brokerage firms and franchisees. The accuracy of information is not guaranteed and should be independently verified. The trademarks REALTOR®, REALTORS® and the REALTOR® logo are controlled by The Canadian Real Estate Association (CREA) and identify real estate professionals who are members of CREA. The trademarks MLS®, Multiple Listing Service® and the associated logos are owned by CREA and identify the quality of services provided by real estate professionals who are members of CREA.