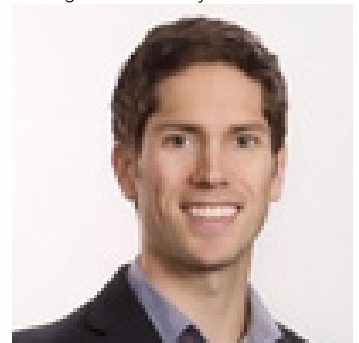


944 Bear Creek Road West Kelowna British Columbia

\$999,900

Incredible 75 acre parcel of bare land located just 15 minutes downtown Kelowna. Acreages of this size are rare to come by and the proximity to city amenities is unbelievably scarce. The acreage spans Bear Creek and there's easement access to the reservoir. At the top of the property there's a large level build site with incredible mountain views. Space, privacy, nature, serenity ... this will be a dream estate property. (id:6769)

Listing Presented By:



Originally Listed by:
RE/MAX Kelowna

<http://www.neufeldjones.com/>



Royal

Lepage Parkside Realty

PO Box 930; 9925 Main St,
Summerland, BC,

Phone: (250) 462-4888
info@joepeters.ca

The property information on this website is derived from the Canadian Real Estate Association's Data Distribution Facility (DDF®). DDF® references real estate listings held by various brokerage firms and franchisees. The accuracy of information is not guaranteed and should be independently verified. The trademarks REALTOR®, REALTORS® and the REALTOR® logo are controlled by The Canadian Real Estate Association (CREA) and identify real estate professionals who are members of CREA. The trademarks MLS®, Multiple Listing Service® and the associated logos are owned by CREA and identify the quality of services provided by real estate professionals who are members of CREA.